



Transportation Master Plan Chapter 6

Planned Roadway Projects in Eldersburg/Sykesville

Planning and Zoning Commission
February 1, 2023

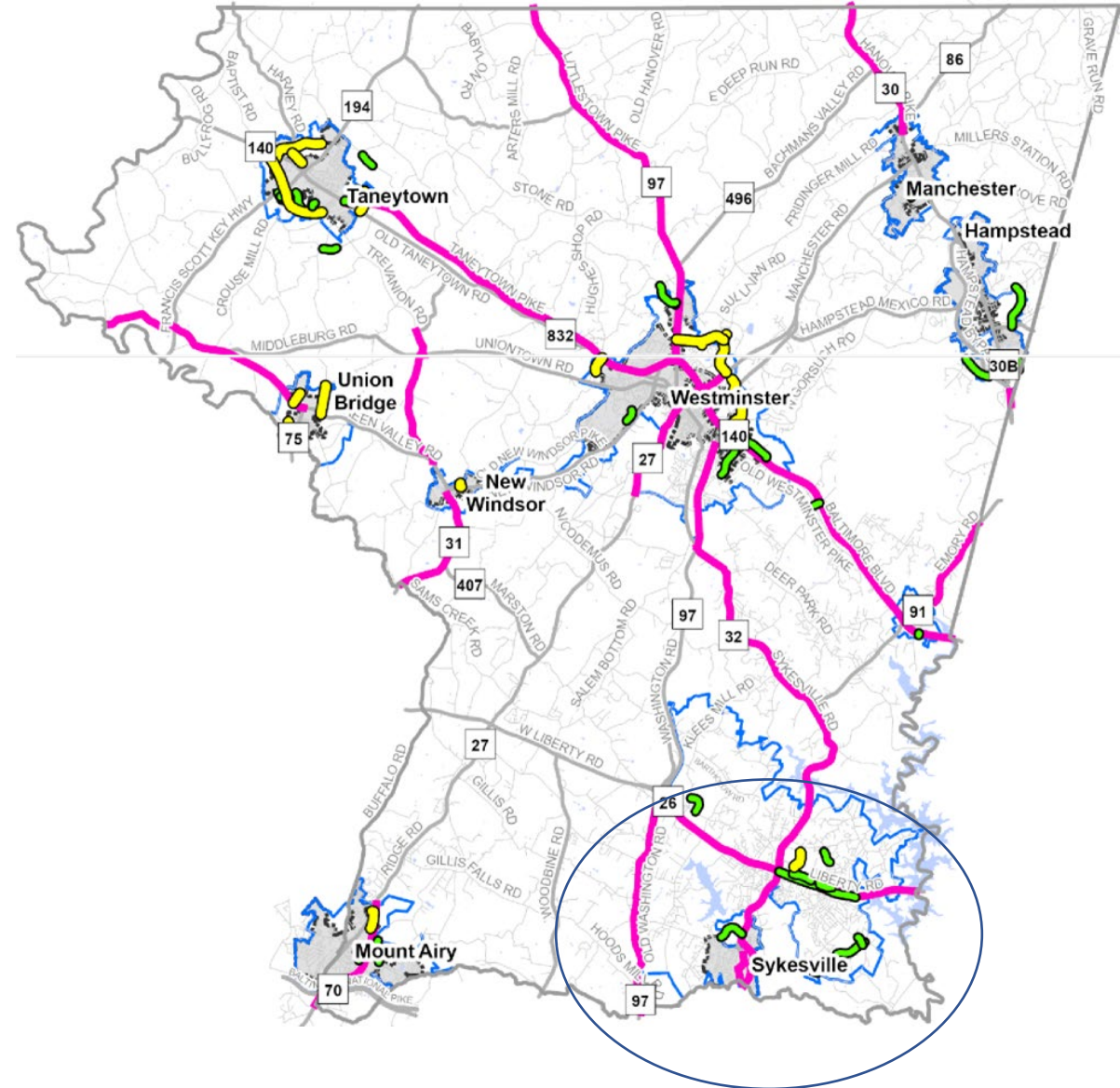


Profile of Eldersburg/Sykesville

- Southeastern portion of the County, providing commuter access south to Howard County, North to Westminster & Finksburg, & east to the Baltimore Metropolitan area
 - 21% of residents also work in Eldersburg; 40% of residents are commuting to Howard and Baltimore Counties
 - 22% workers are travelling from Baltimore County & City
- County's largest DGA, expected to add the second highest amount of people, households and jobs over the next 20 years
- The MD 26 corridor experiences moderate intersection delay during peak hours and reduced speeds in the area of MD 32
- MD 32 experiences reduced speeds and queuing concerns through the center of Eldersburg
- LOS D occurs during both peak hours at MD 26/MD 32

Roads Included

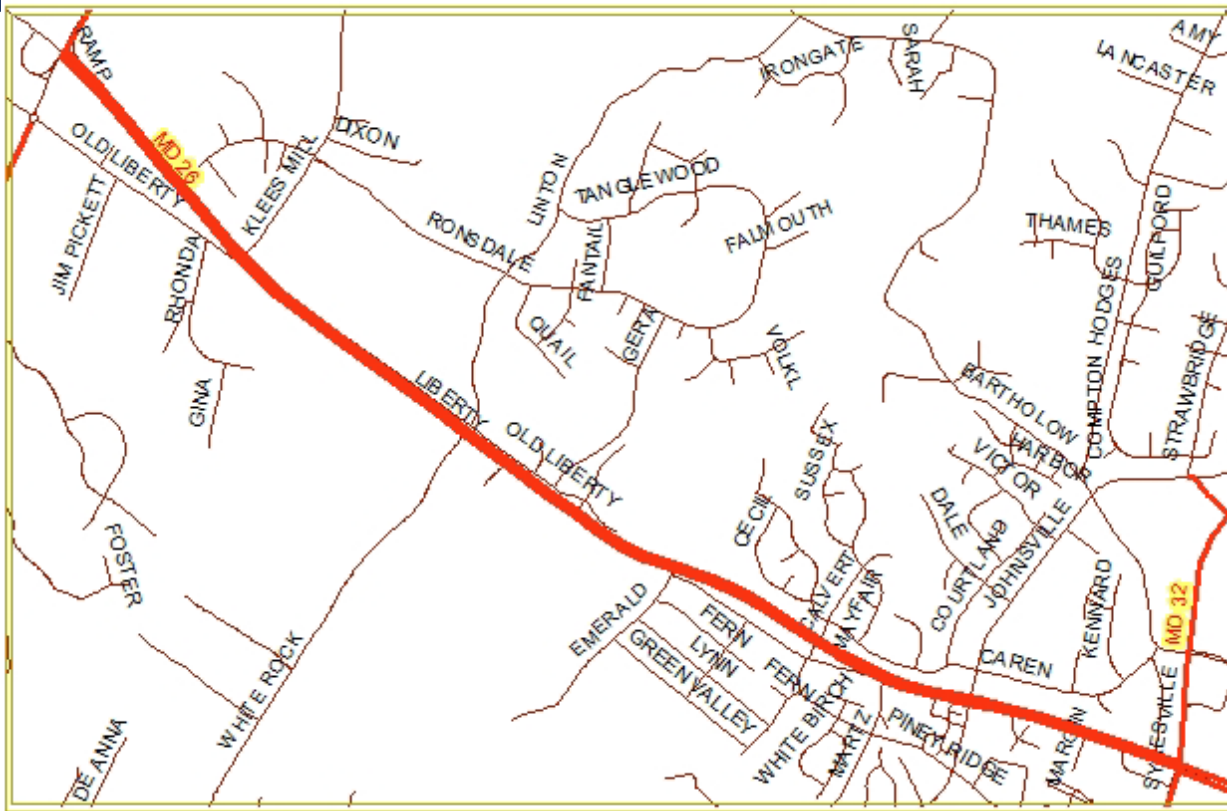
- 6 Maryland State Highway Projects
- 1 Planned Major Street (County and Municipal)
- 7 Planned Neighborhood Connections (County and Municipal)



State Roadway Projects

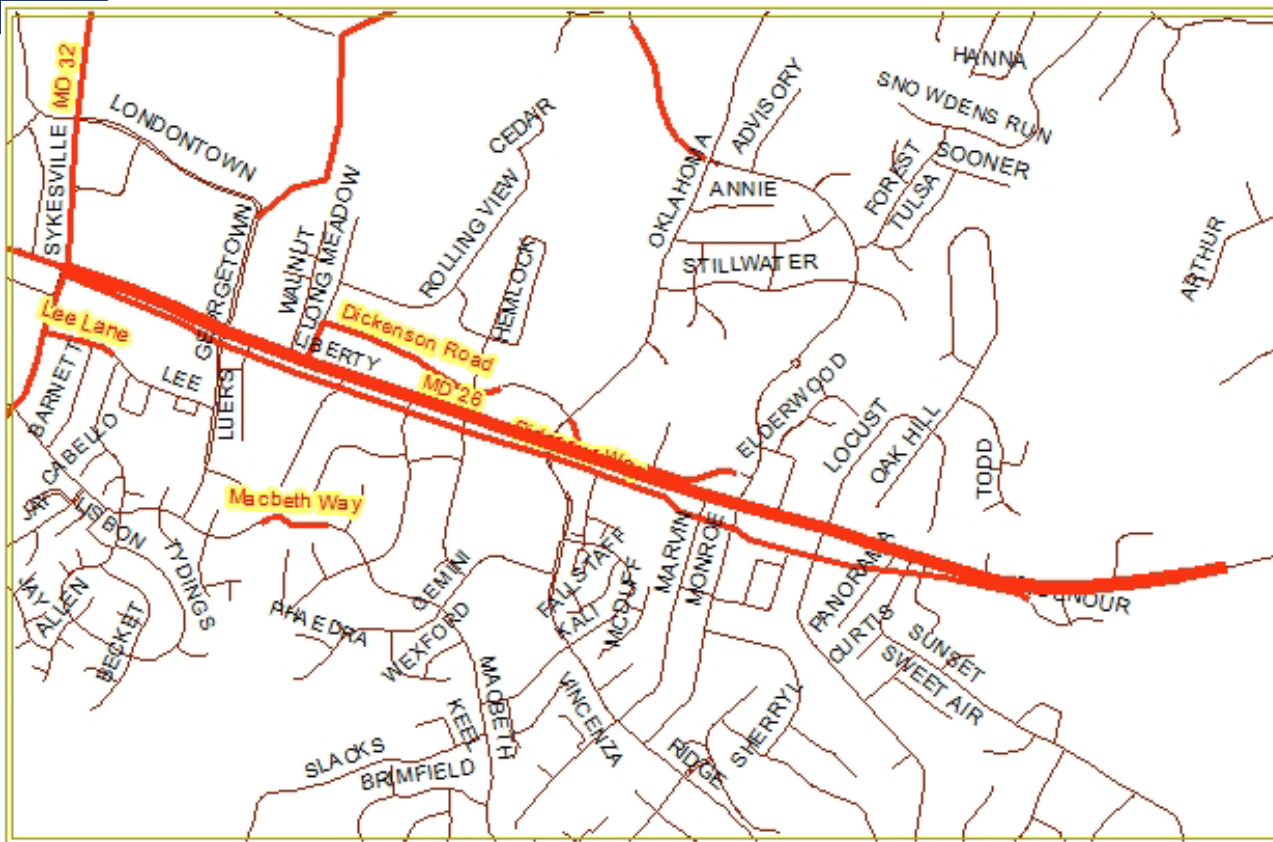
- Six State Roadway Projects included in this Plan in the Eldersburg area:
 - MD26 (Liberty Rd)
 - MD 32 to MD 97
 - MD 32 to Liberty Reservoir
 - MD 32 (Sykesville Rd.)
 - Howard County Line to MD 26
 - MD 26 to Pine Knob Road
 - MD 97 (Old Washington Road)
 - Howard County line to .02 miles south of MD 26
 - MD 851 (Main Street)
 - Streetscape
- These roads are included in the State's Highway Needs Inventory (HNI)
 - a technical reference and planning document which identifies highway improvements in each county
 - Last updated in 2020

MD 26 (Liberty Road)



- MD 32 to MD 97
 - Minor Arterial
 - 3.59 miles
 - This project involves widening the current roadway from 2 to 4 lanes in the area from MD 32 to MD 97. It also includes divided highway reconstruction and access controls.
 - This project has not been identified as a priority for the County
 - There have been recent (2019) intersection improvements at Emerald Lane to Calvert Way

MD 26 (Liberty Road)



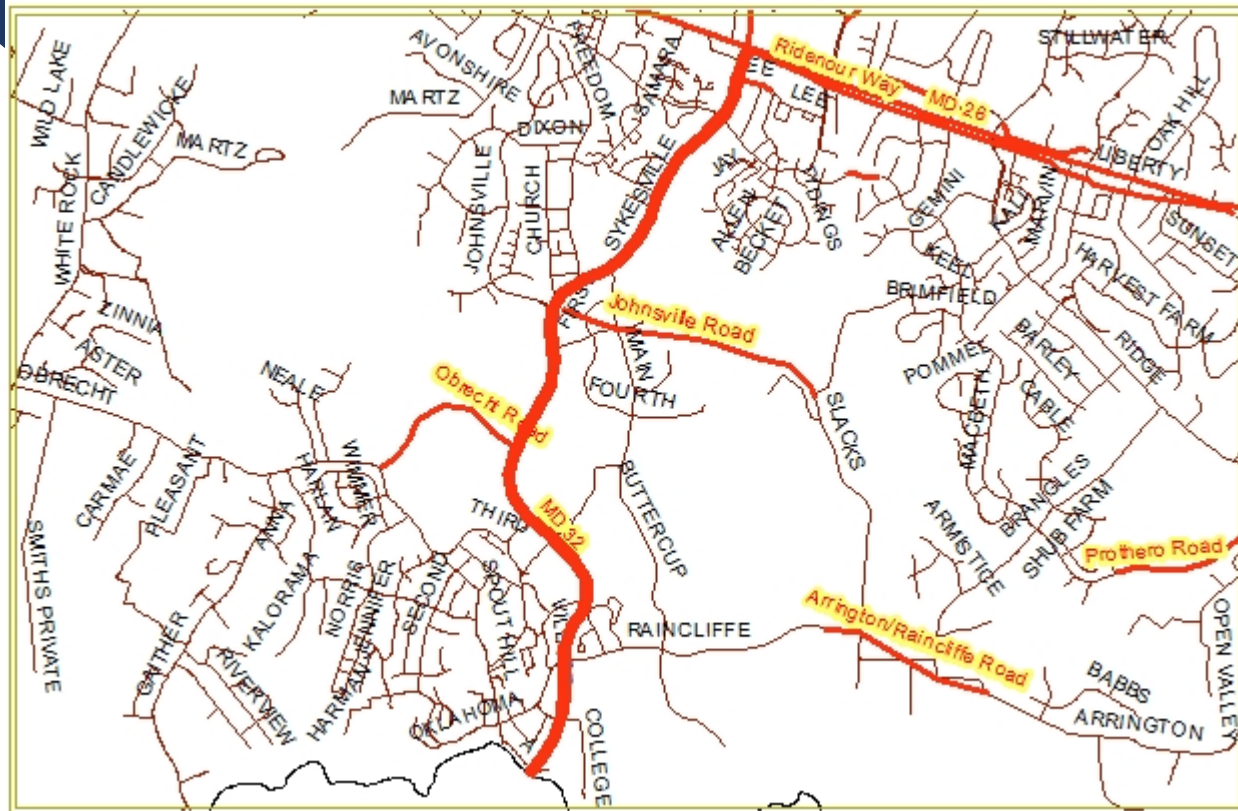
- MD 32 to Liberty Reservoir
 - Principal Arterial
 - 2.45 miles
 - The project proposes widening the current roadway from 4 to 6 lanes, partially dividing the roadway and limiting crossover movements along the corridor. The project also includes pedestrian and bicycle facilities.
 - This project has been identified as a priority for the County, is in the Regional Transportation Plan, and is shown in the State CTP as unfunded

MD 26 (Liberty Road) (Cont.)



- This project was the subject of a Corridor Study by SHA completed in 2020, which concluded that traffic volumes had grown more slowly than expected since the previous 2002 Study
- The updated study recommended strategic improvements rather than full widening, including:
 - Access Management
 - Pedestrian Strategies
 - Traffic Signal Analysis
 - Intersection Operation Improvements

MD 32 (Sykesville Road)



- Howard County line to MD26
 - Minor Arterial
 - 2.92 Miles
 - This project would involve 2 lane reconstruction as part of the state's effort to improve safety and improve system connectivity.
 - This project has been the County's #1 priority for a number of years
 - Included in 2021 Sykesville Comprehensive Plan and the Regional Transportation Plan
 - Recent improvements include road widening from Main Street to Macbeth Way

MD 32 (Sykesville Road) (cont.)



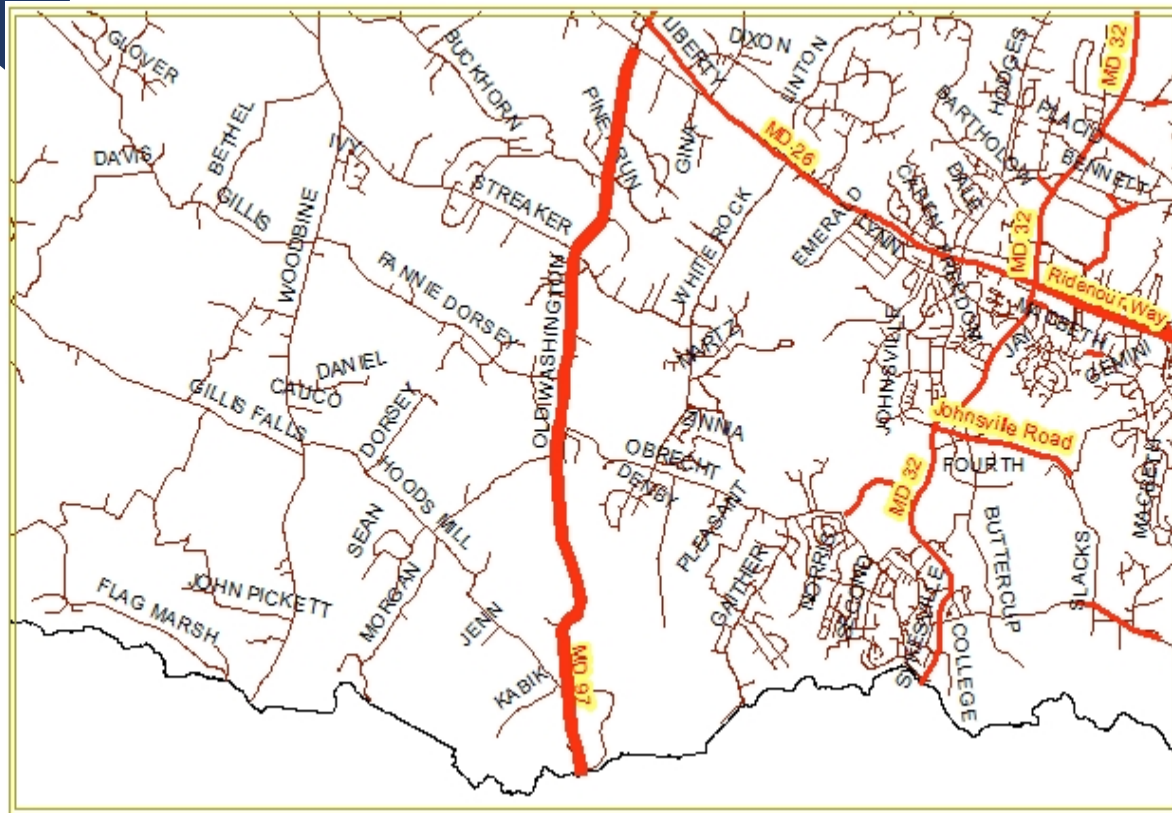
- This project was the subject of a Planning and Environmental Linkages (PEL) Study in 2018
- The study concluded that full widening is not justified based on traffic forecasts through 2040
- Breakout projects to handle localized congestion and safety issues were proposed, including intersection and corridor segment improvements, access consolidation, signalization and operational improvements
- These improvements are recommended in Chapter 5 as “Most Promising Potential Improvements”
- A breakout project is included in the FY24 proposed CTP to make geometric improvements from Main Street to Second Ave, as recommended in the PEL Study

MD 32 (Sykesville Road)



- MD26 to Pine Knob Road
 - Minor Arterial
 - 2.92 Miles
 - This project would involve 2 lane reconstruction as part of the state's effort to improve safety and improve system connectivity.
 - This project has not been identified as a County priority, however the state recently completed improvements at the intersection of MD 32 and Bennett Rd/Johnsville Rd

MD 97 (Old Washington Road)



- Howard County line to .02 miles south of MD 26
 - Major Collector
 - 5.51 Miles
 - This reconstruction project is part of the state's effort to improve safety, system connectivity, reduce emissions, improve access to major activity centers, and alleviate congestion along this corridor
 - This project has not been identified as a County priority

MD 851 (Main Street Streetscape)

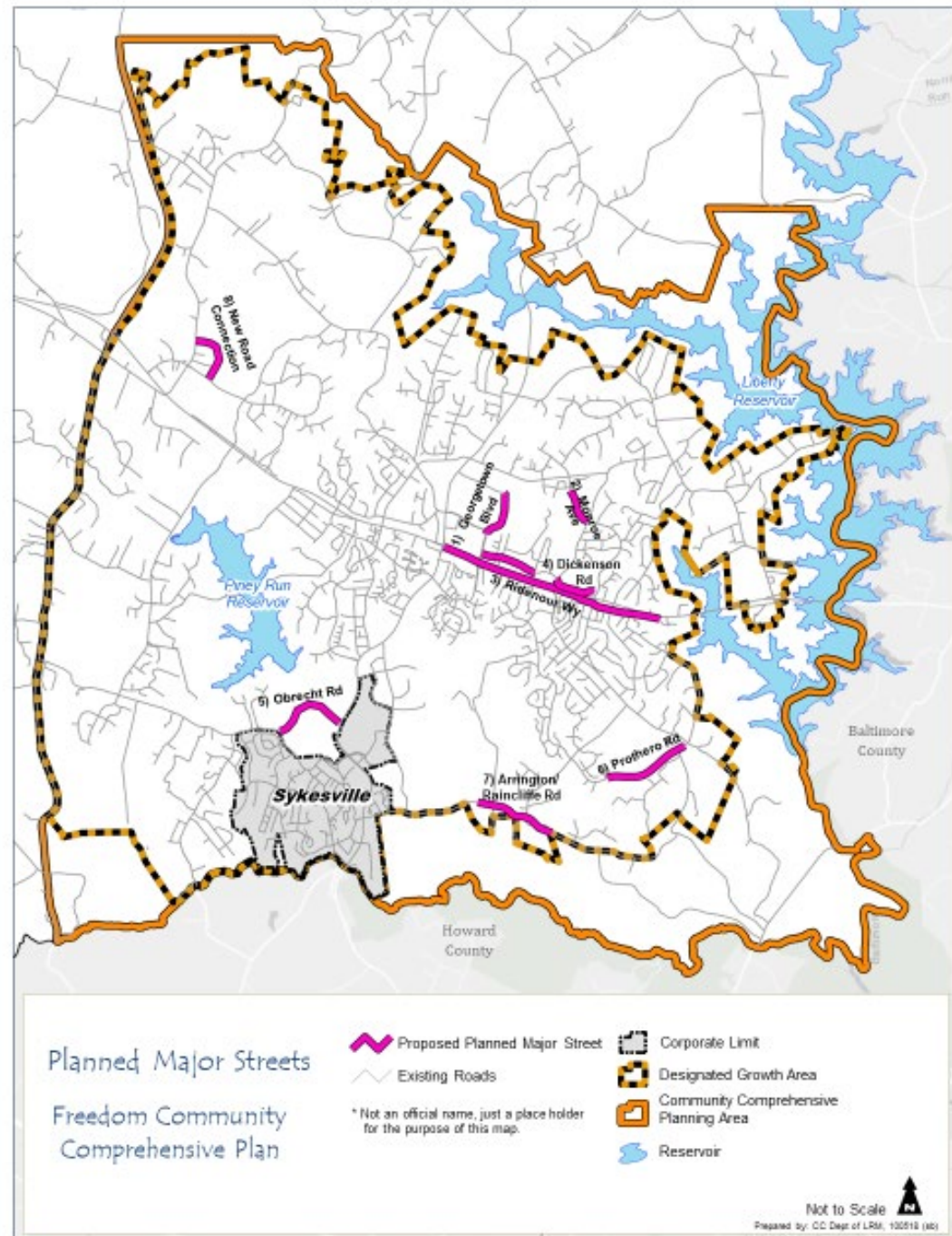


- Sykesville Main Street/Springfield Avenue (Cooper Drive to South Branch of the Patapsco River) Urban Reconstruction :
 - This project will help to restore the Town's historic Main Street to an attractive and pedestrian-friendly urban local roadway
 - It will involve roadway reconstruction and improvements to pedestrian and bicycle facilities, as well as inclusion of streetscape amenities.
 - Drainage Improvements are included in State CTP; design underway
 - Included in the Regional Transportation Plan
 - Project has been a high priority of the County

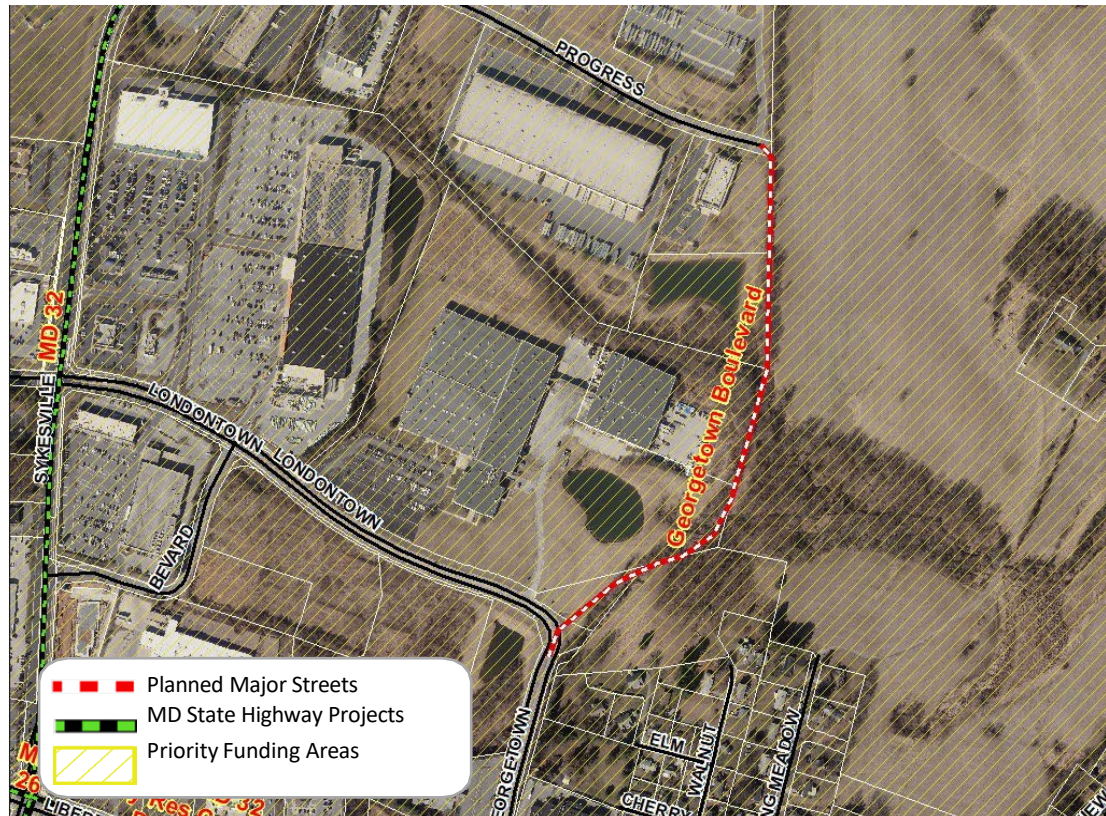
Planned Major Streets (PMS) & Planned Neighborhood Connections (PNC)

- 1 PMS
- 7 PNC

- Consistent with
the 2018 FCCP

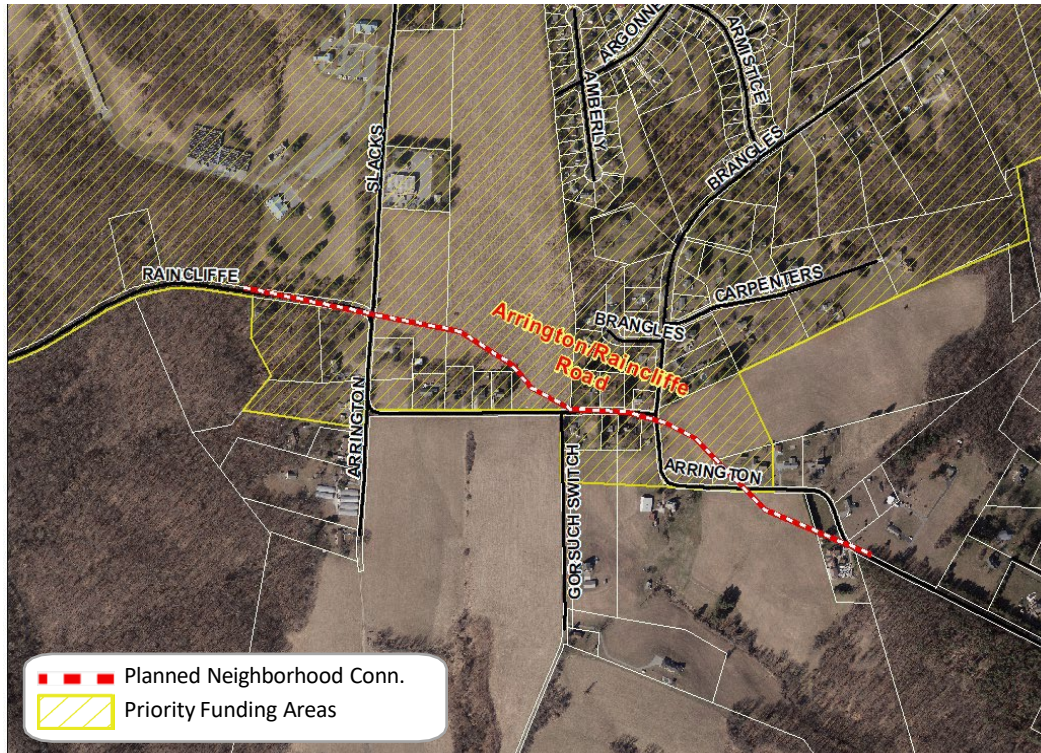


Georgetown Blvd. Extended



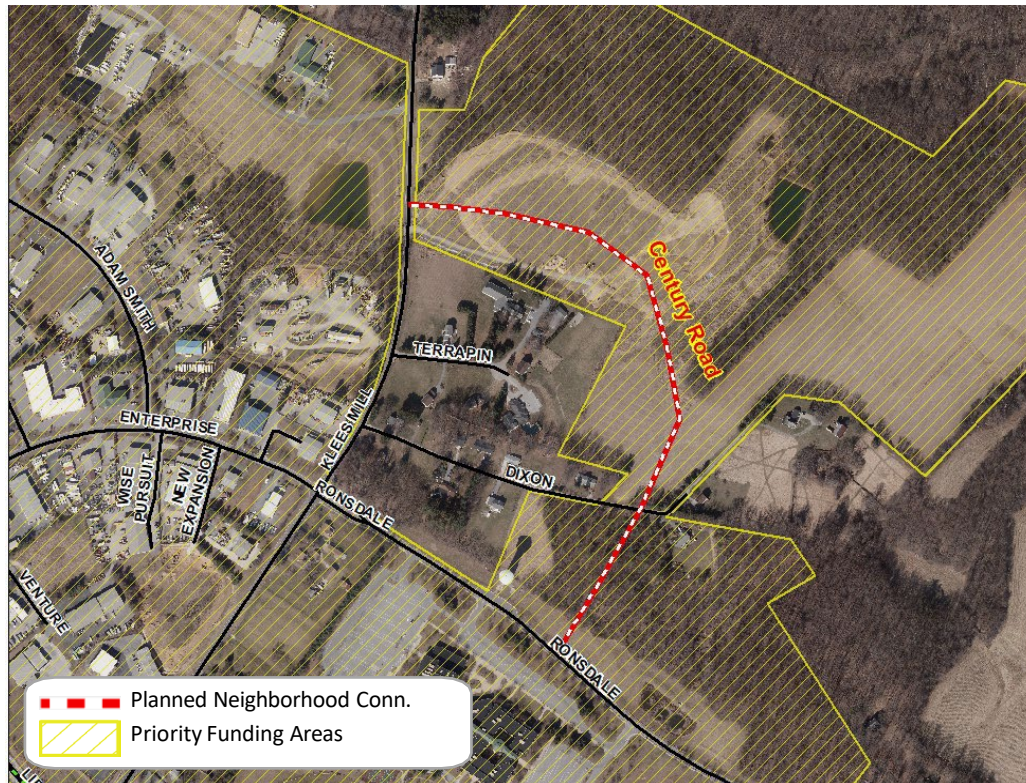
- Extension of Georgetown Blvd. to Progress Way
 - Minor Collector
 - 2,355 Feet (.45 mile)
 - Will provide redundancy in the network, improving access, connectivity and circulation in the center of the Freedom area proposed for commercial and residential development
 - Recommended in Chapter 5 as a “Most Promising Potential Improvement “
 - This project was identified as a High Priority in the 2018 FCCP, and is included in the Adopted FY23 and Proposed FY24 CIP

Arrington Road Realignment



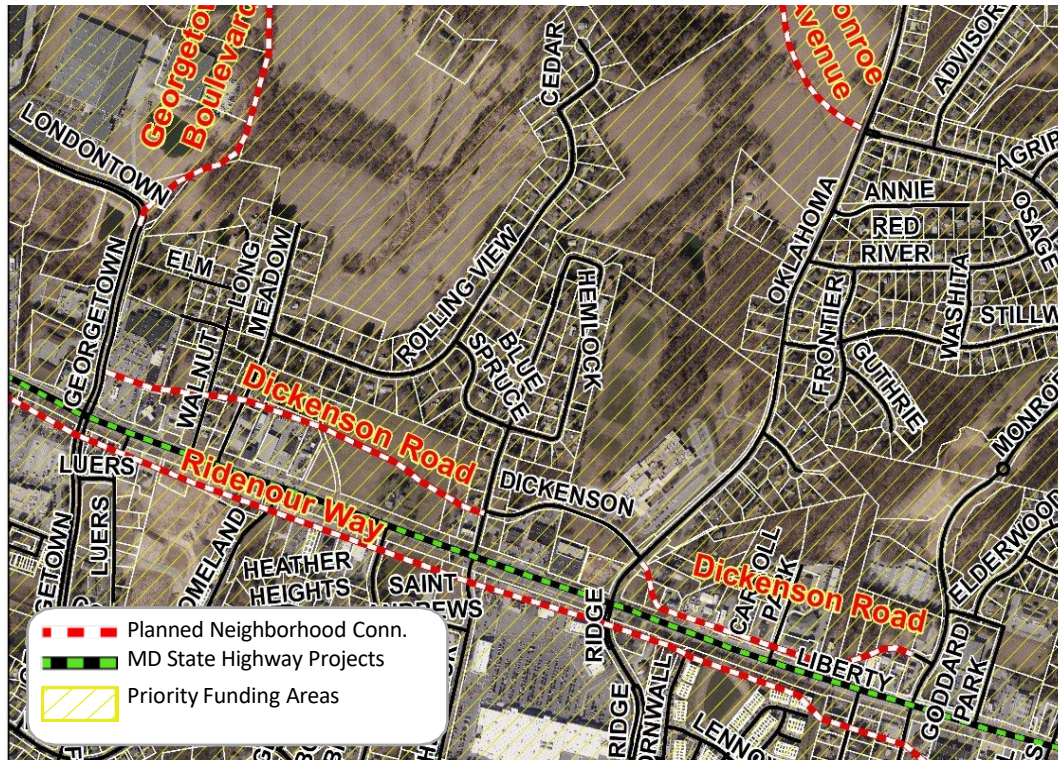
- Realignment of Arrington/Raincliffe Road
 - 3,886 Feet (.74 mile)
 - Minor Collector
 - Reconstructing this segment of Arrington/Raincliffe will eliminate sharp curves in the road, improving the geometry of the roadway for both through traffic and local roads.
 - A portion of the road will be constructed by the developer of Freedom's Grant.

Century Road



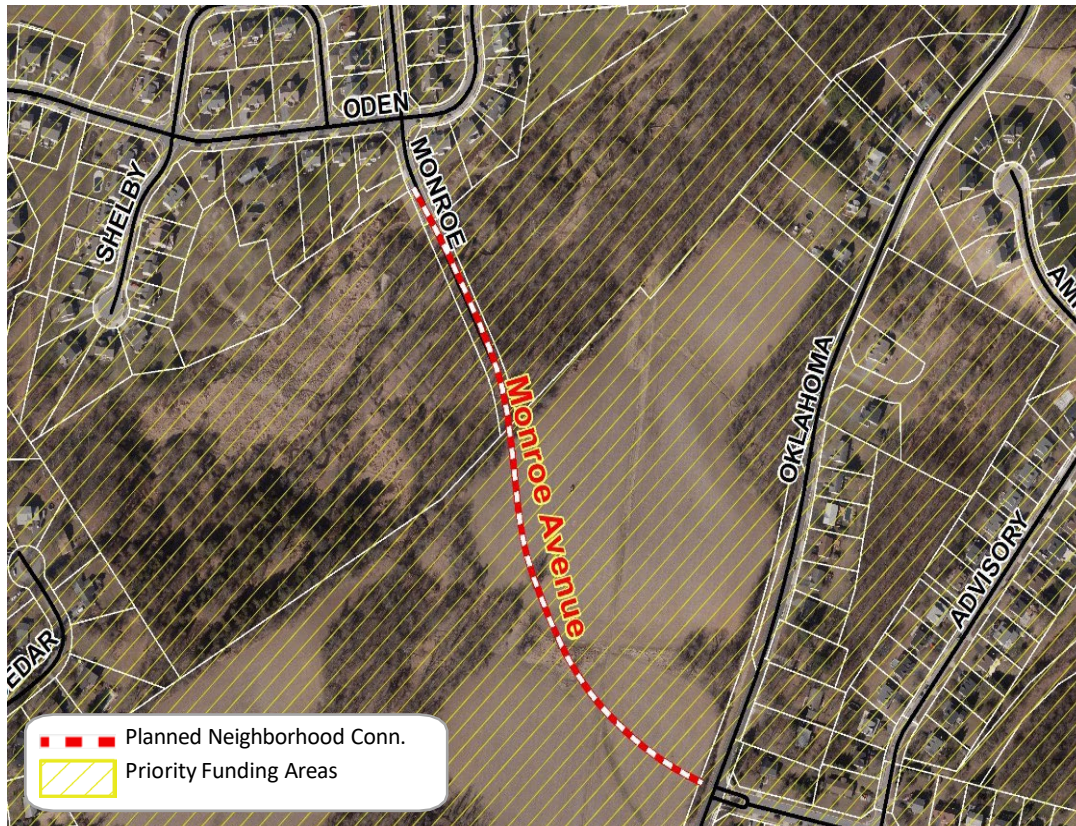
- New road connecting Ronsdale Road to Klees Mill Road
 - 2,697 Feet (.51 Mile)
 - This new road was added in the 2018 FCCP.
 - It provides a necessary connection through the newly designated employment campus area and creates an opportunity for local traffic to avoid the MD 26 and MD 32 corridors.

Dickenson Road Extended



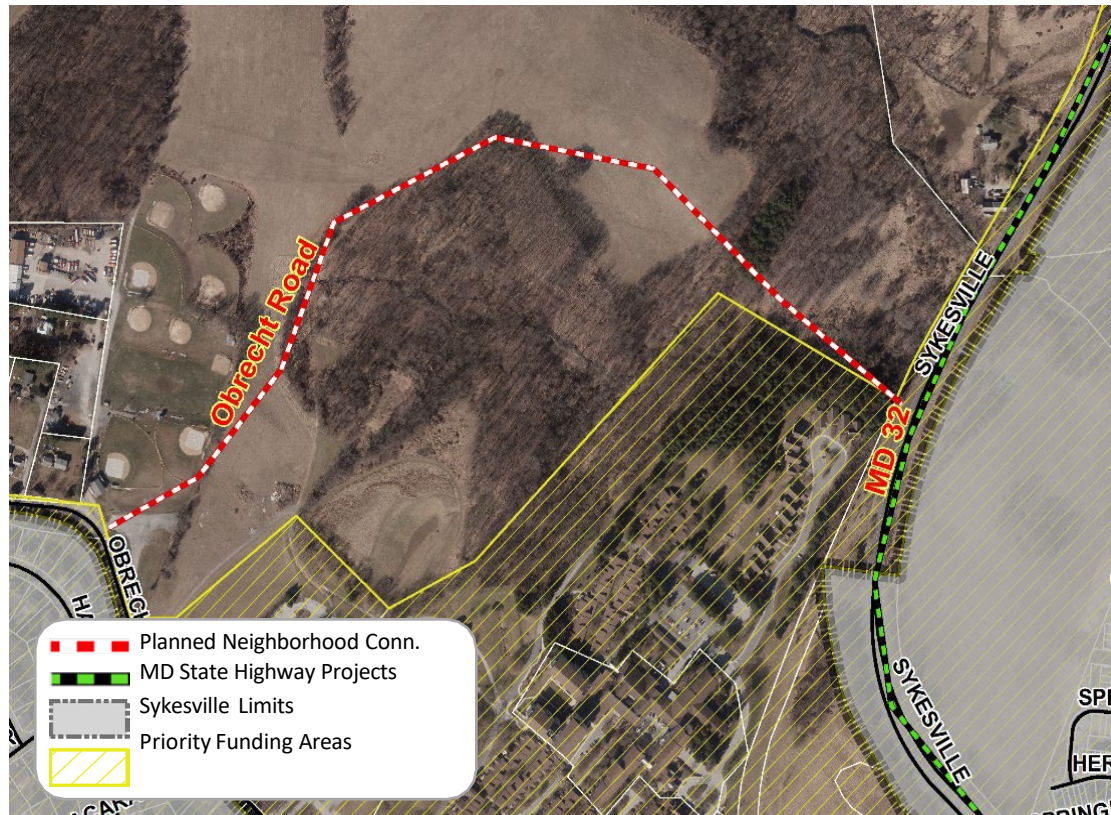
- Construction of parallel road north of Liberty Road from Monroe Avenue to Georgetown Blvd
 - Local Roadway
 - 4,751 Feet (.90 mile)
 - This road is partially built
 - It will serve as a service road that will create redundancy in the roadway network, providing an alternate route for local vehicular traffic. In its entirety, it will provide access to area businesses while eliminating several points of ingress and egress directly off MD 26.
 - Identified in the 2018 FCCP as a High Priority
 - Recommended in Chapter 5 as a “Most Promising Potential Improvement”

Monroe Avenue Extended



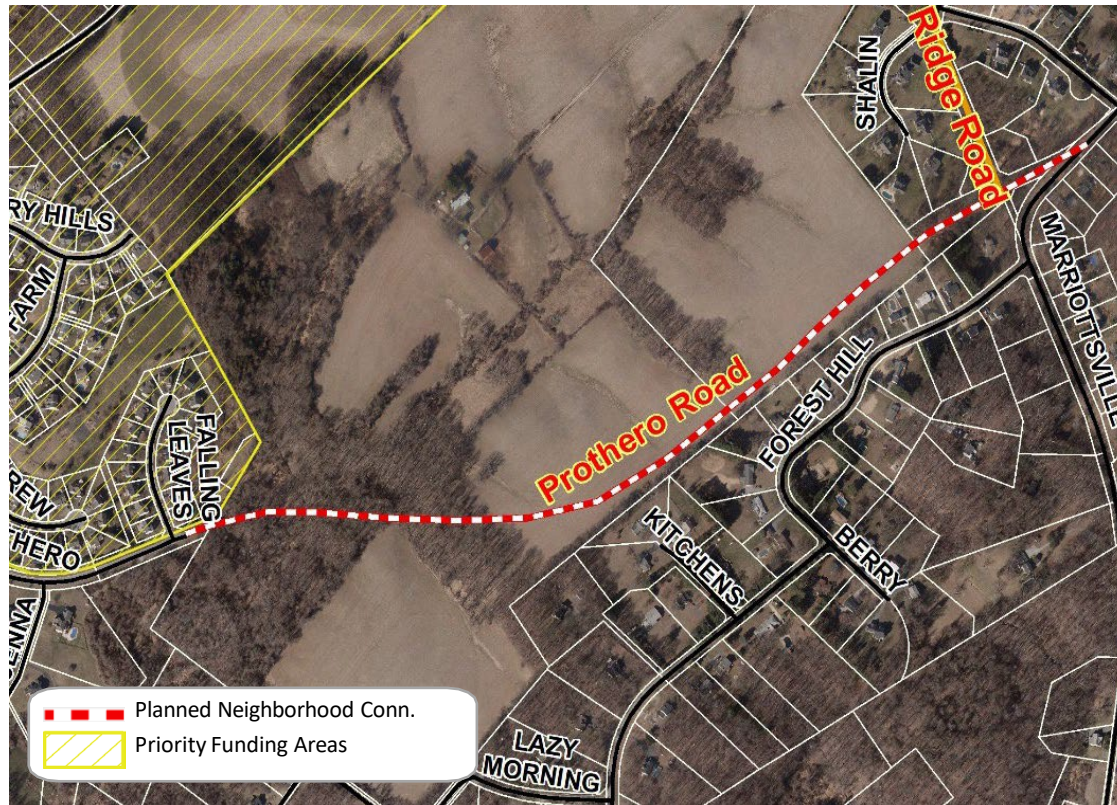
- Monroe Avenue Extended to Oklahoma Road
 - Minor Collector
 - 1,699 Feet (.32 Mile)
 - This extension will provide redundancy in the network, improve access, connectivity, and circulation in the northeast portion of the Freedom community in an area of residential development.
 - Portion of extension will be developer constructed as part of a development in-process
 - Identified in the 2018 FCCP as a High Priority
 - Included in the FY23 Adopted and FY 24 Proposed County CIP

Obrecht Road Extended



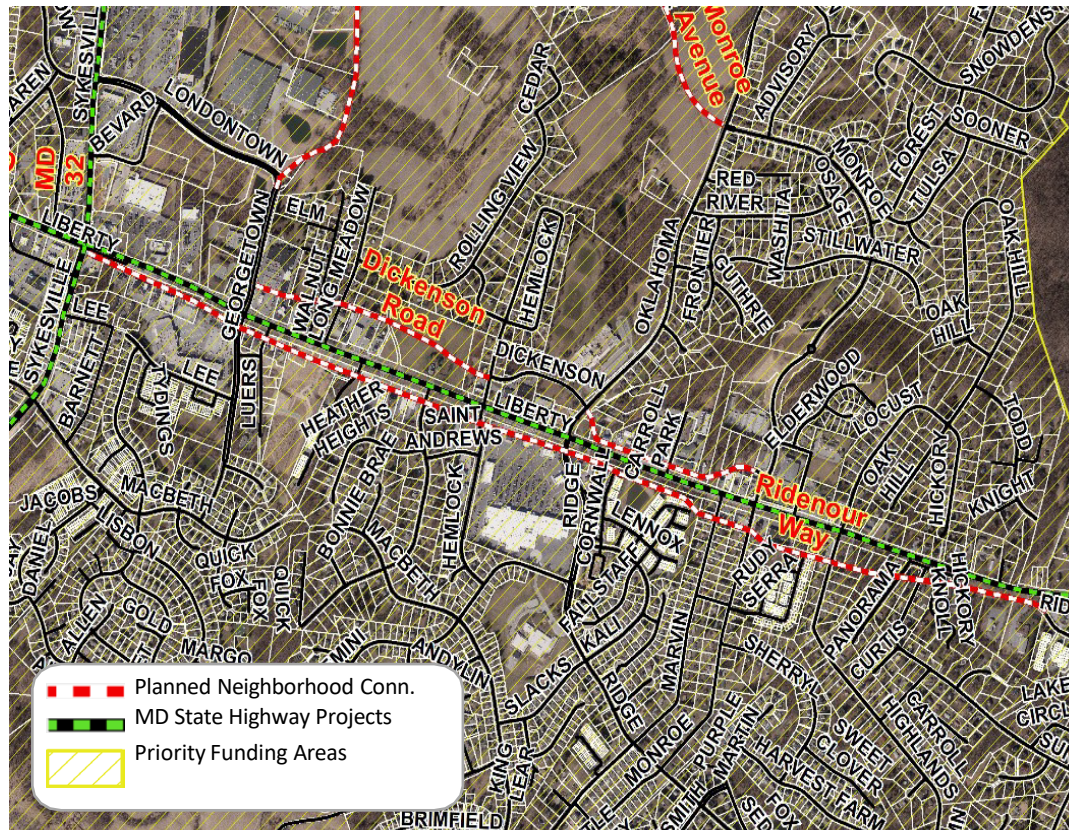
- Extension of Obrecht Road to MD 32
 - Major Collector
 - 3,741 Feet (.71 Mile)
 - This extension will connect a major collector in the Freedom Community that provides east/west traffic flow from MD 97 to Third Avenue in Sykesville, to MD 32. It will allow vehicular traffic to bypass the winding roads and intersections along Third Avenue and Springfield Avenue in the Town of Sykesville. The exact alignment will have to be evaluated.

Prothero Road Extended



- Extension of Prothero Road east to Ridge Road and Marriottsville Road
 - Minor Collector
 - 4,166 Feet (.79 Mile)
 - This extension will provide redundancy in the network, as well as to improve access, connectivity, and circulation in the southeast part of the Freedom Community in a residential area. A re-examination of the proposed alignment is recommended as development of the property progresses.

Ridenour Way Extended



- Ridenour Way (parallel road to the south of MD 26)
 - Local Roadway
 - 10,870 Feet (2.06 Miles)
 - This planned service road will create redundancy in the network and provide access to area businesses.
 - It will increase the safety and efficiency of MD 26 by reducing direct access points. It is intended to provide alternative routes for local vehicular traffic.
 - Several portions of this road have been built by developers and some ROW has been secured.
 - Identified in the 2018 FCCP as a High Priority

6 Roads Eliminated from the Plan

- Johnsville Road Extended – Removed from 2018 FCCP
- Bandy Avenue to Mycroft Street Connection - Completed
- Conan Doyle Way Extended - Removed from 2018 FCCP
- Lee Lane Extended - Removed from 2018 FCCP
- MacBeth Way Extended - Removed from 2018 FCCP
- Monroe Avenue Extended (Bennett Road to MD 32) - Removed from 2018 FCCP

