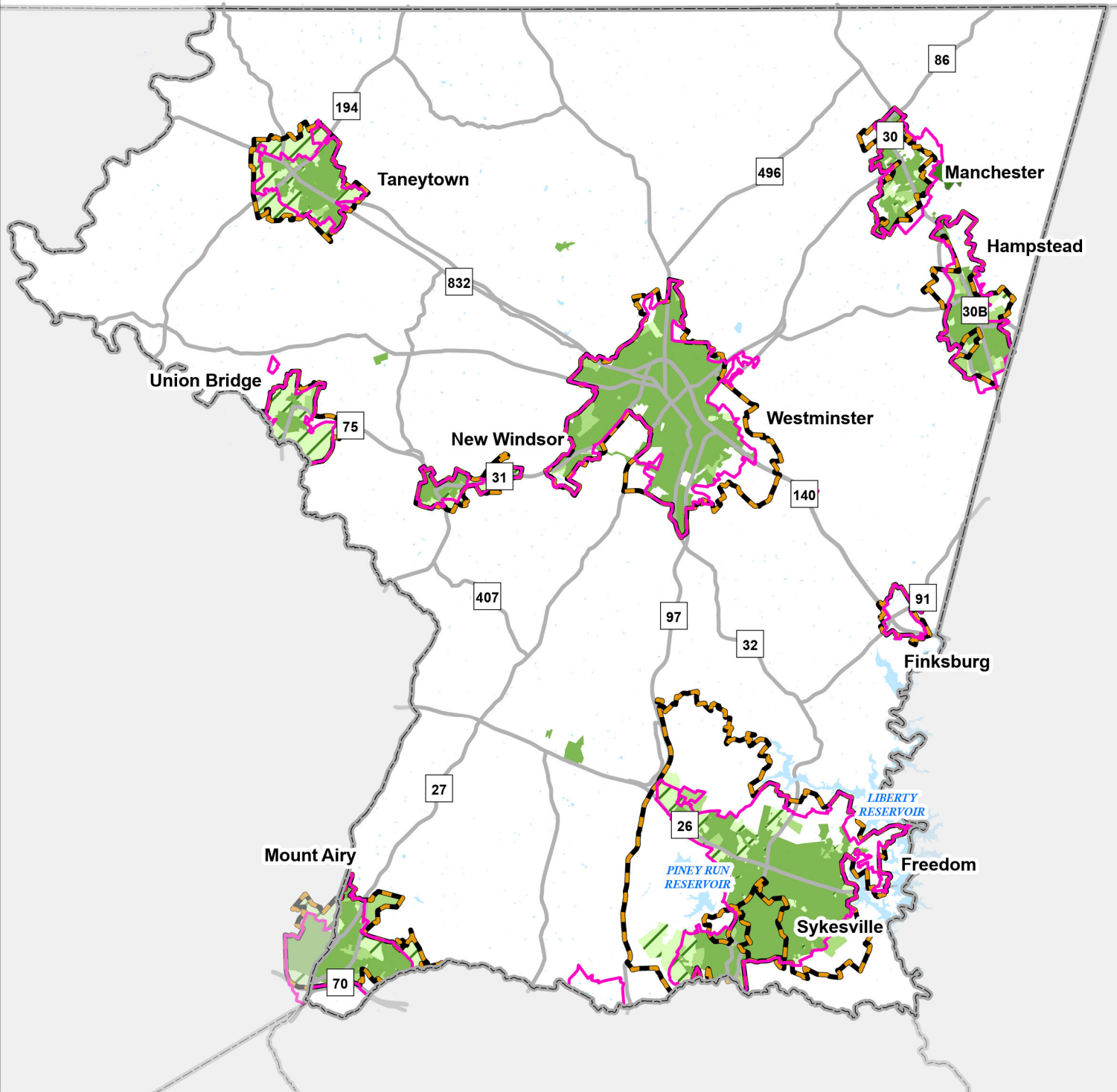


# Planned Sewer Service Areas

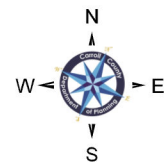


## Legend

### Sewer Service Area

- Existing/Final Planning
- Priority (0-6 yr)
- Future (7-10 yr)
- Long Range (10+ yr)
- Wastewater Treatment

- Priority Funding Area
- Growth Area
- Existing Reservoir
- County Border



For planning purposes only. Contact regulating agency for official data.  
Prepared by the Carroll County Department of Planning, 3/10/2023(kc)