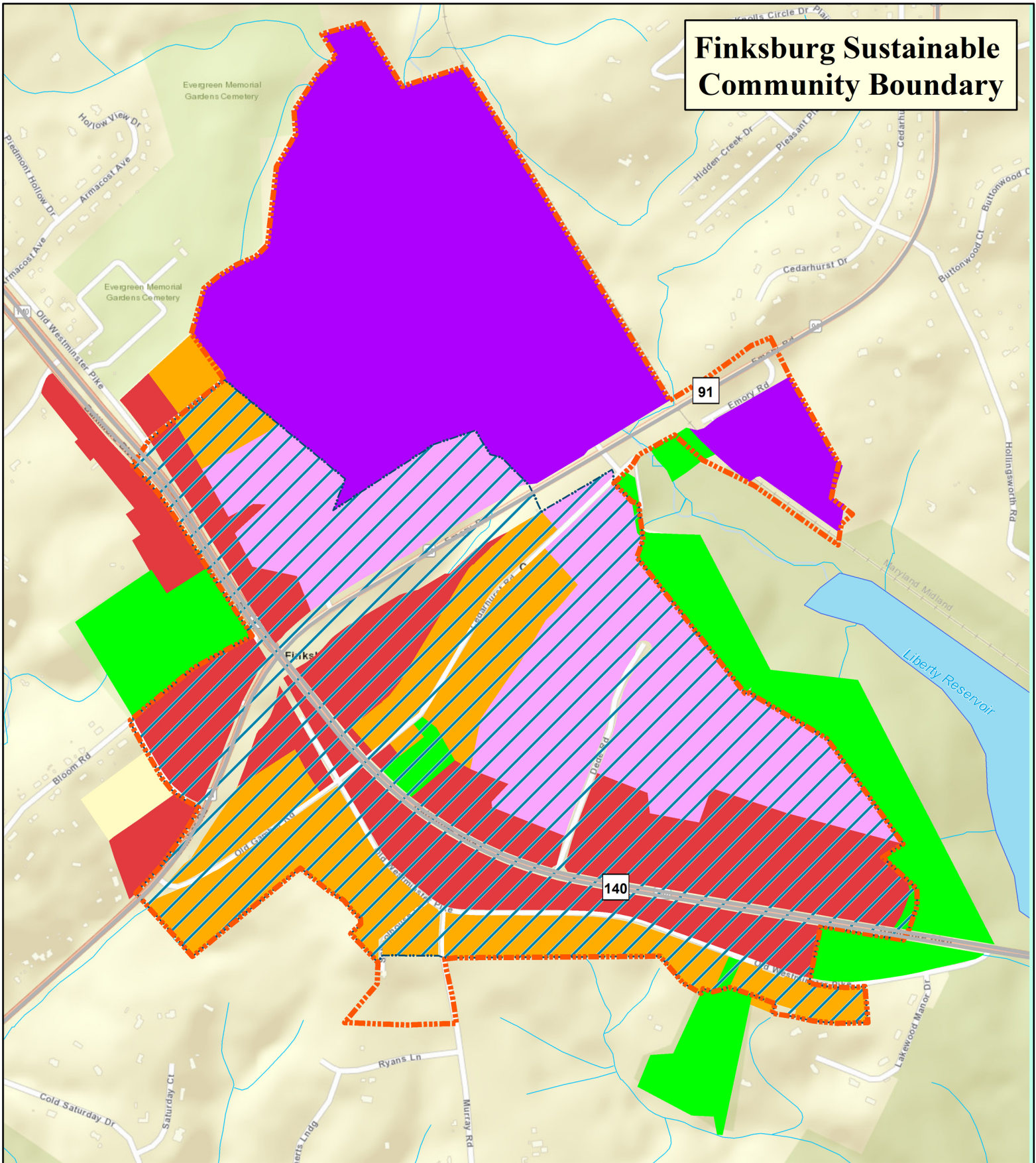


# Finksburg Sustainable Community Boundary



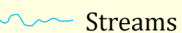
## Legend



Finksburg Sustainable Community



Priority Funding Area





Streams





Reservoirs


## Finksburg Designated Land Use


 Low Density Residential

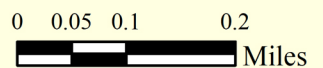
 Suburban Residential

 Commercial

 Industrial General

 Industrial Restricted

 Conservation



Created by Carroll County Dept of Planning 12/6/2018 (DM)