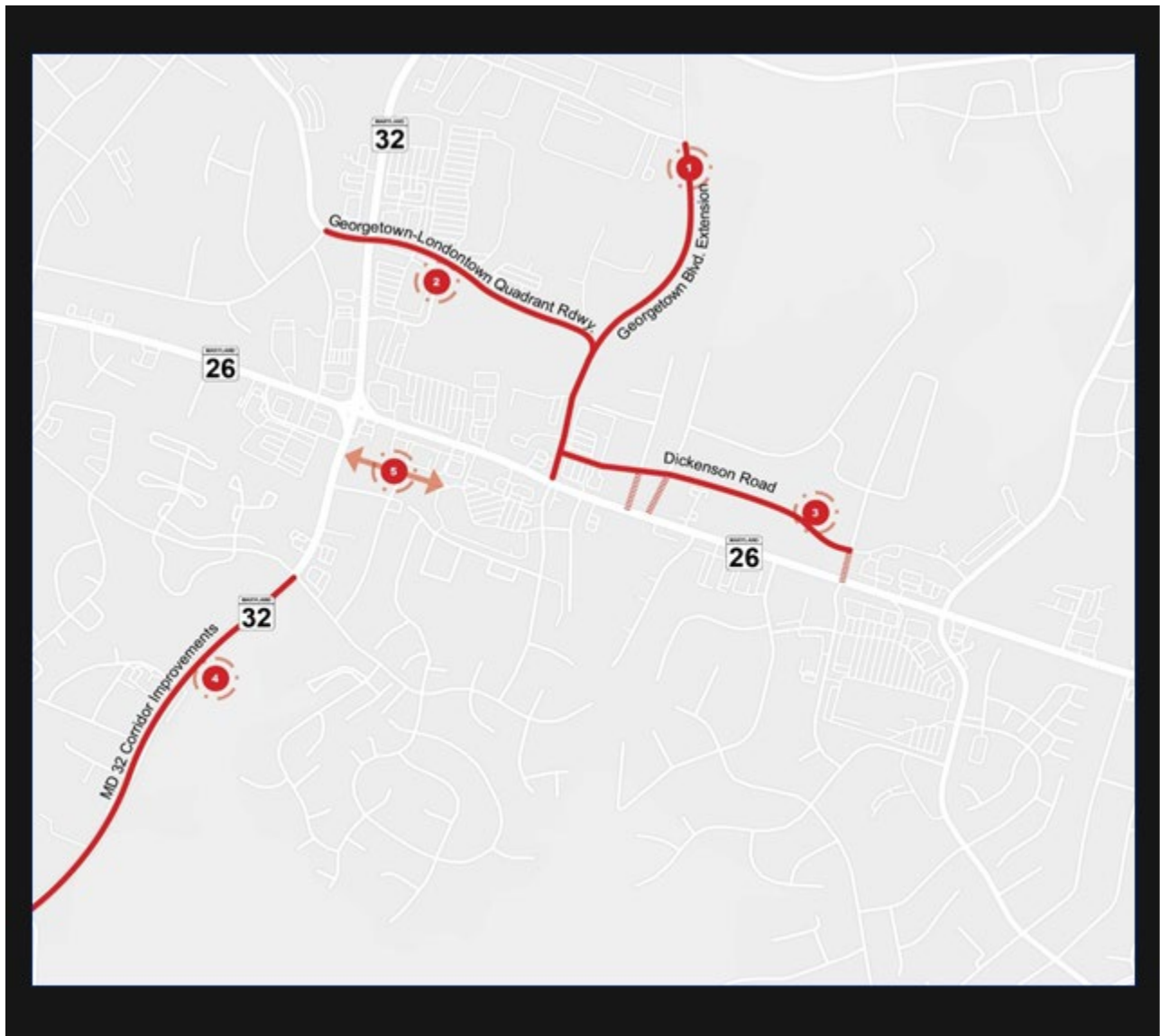


Most Promising Potential Improvements – Eldersburg/Sykesville

1. Extend Georgetown Boulevard to Progress Way.
2. Implement the Quadrant Roadway concept from the MD 32 at MD 26 Practical Design Concept Study.
3. Construct Dickenson Road between Oklahoma Road and Georgetown Boulevard; restrict side street access.
4. Implement MD 32 operations and access improvements.
5. Re-examine options for connectivity in southeast quadrant.



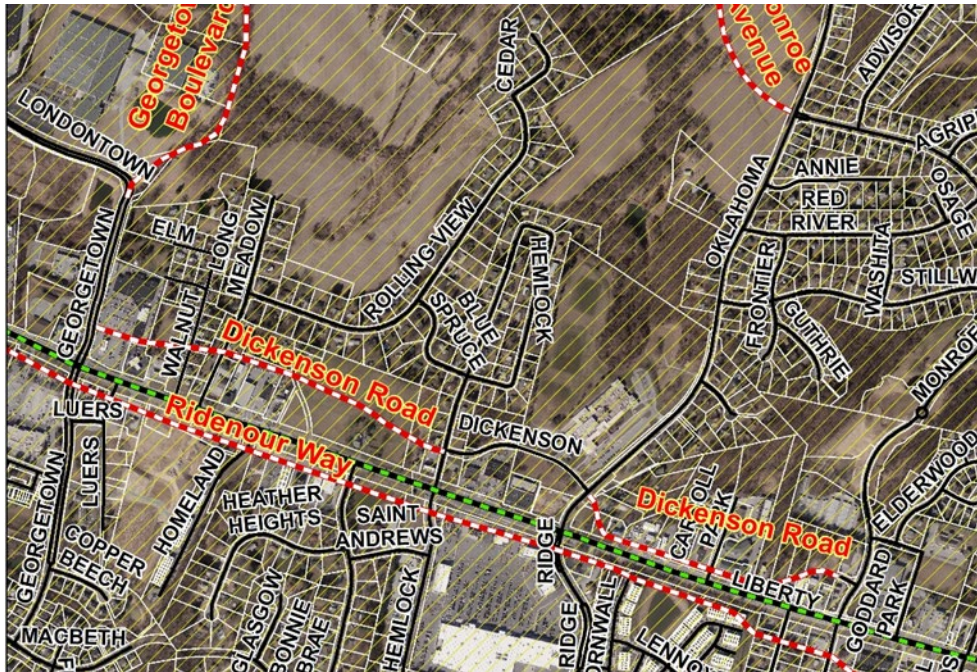
1. Extend Georgetown Boulevard between Londontown Boulevard and Progress Way.



2. Implement the Quadrant Roadway concept from the MD 32 at MD 26 Practical Design Concept Study.



3. Construct Dickenson Road between Oklahoma Road and Georgetown Boulevard and manage access to MD 26

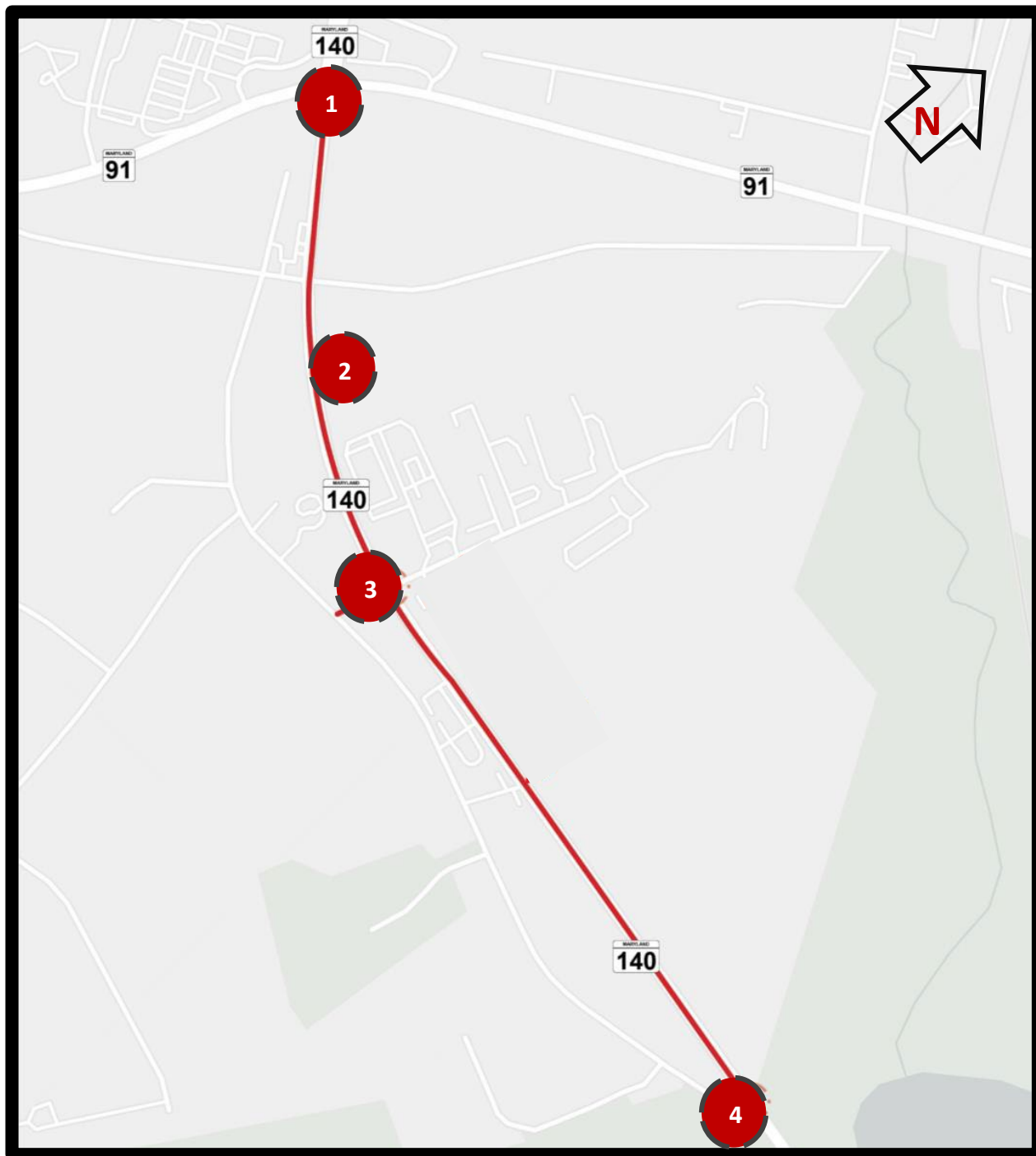


4. Construct strategic operational improvements along MD 32 between the Howard County line as outlined in the 2018 MD 32 Planning Study.
 - Currently in proposed FY23 -28 Consolidated Transportation Program (CTP)
2nd Street to Main Street : Improve intersection geometry, extend turn lanes, modify access, and evaluate signal warrant at Main Street



Most Promising Potential Improvements – Finksburg

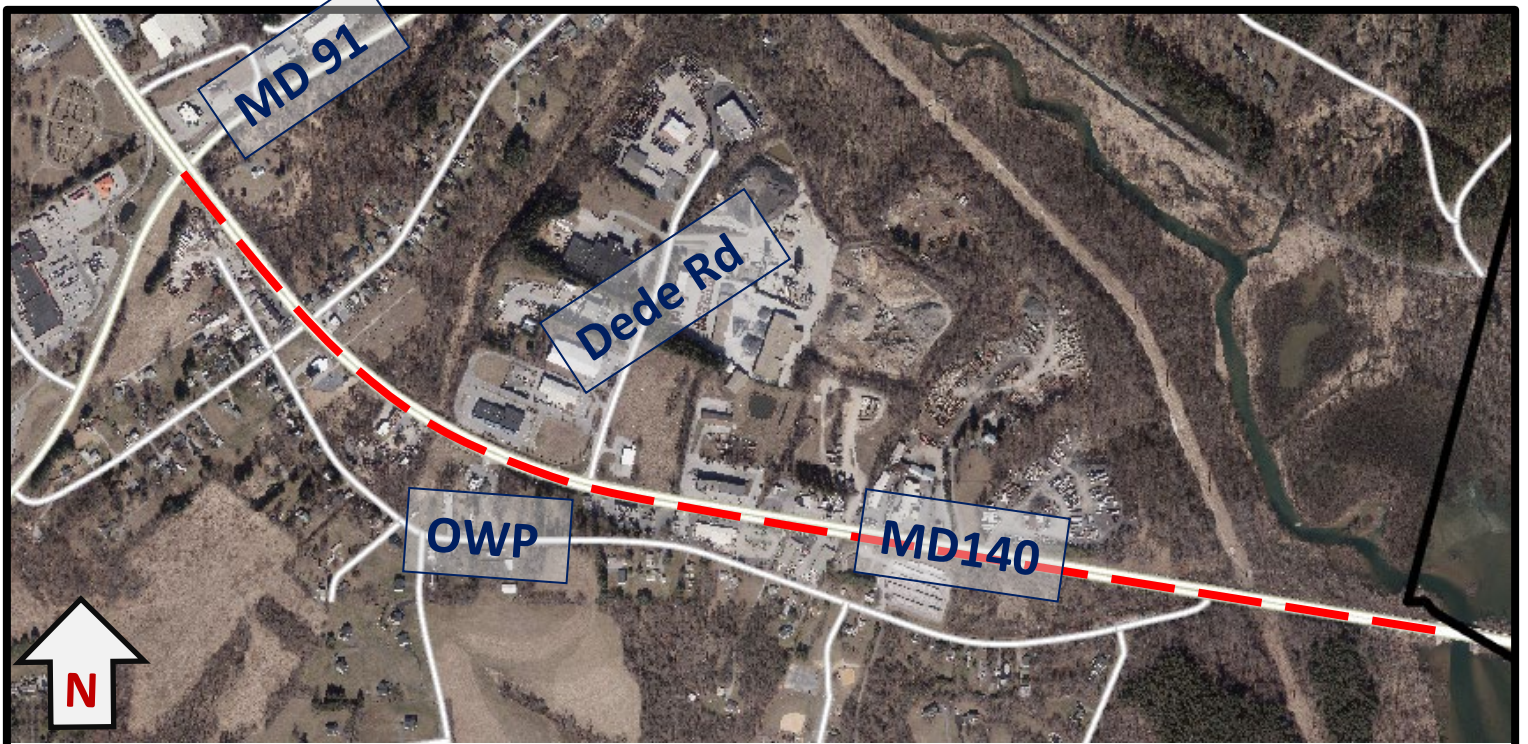
1. Construct a jughandle design at MD 140/MD 91
2. Construct a median from the Baltimore County line to MD 91, with a single break at Dede Road
3. Extend Dede Road across MD 140 to connect to Old Westminster Pike
4. Convert the intersection of Old Westminster Pike and MD 140 to right-in/right-out access



1. Construct a jughandle design at MD 140/MD 91



2. Construct a median from the Baltimore County line to MD 91, with a single break at Dede Road



3. Extend Dede Road across MD 140 to connect to Old Westminster Pike



4. Convert the intersection of Old Westminster Pike and MD 140 to right-in/right-out access

