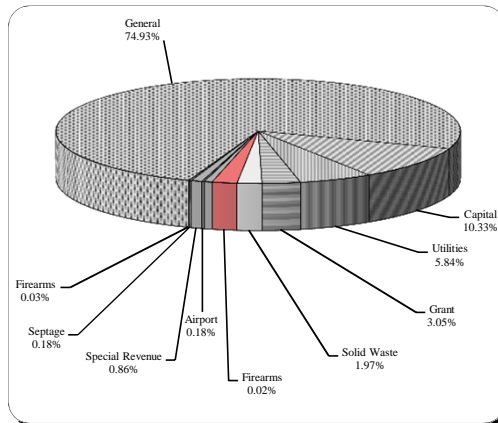


Financial and Demographic Data

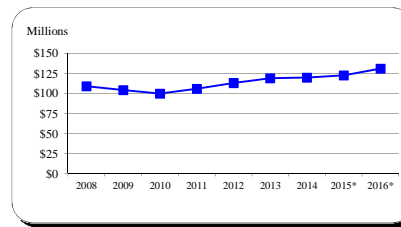
FY 16 Budget By Fund

Fund Type	FY 16	% of Total
General	\$379,962,320	74.9%
Capital	52,383,471	10.3%
Utilities	29,598,565	5.8%
Grant	15,466,889	3.0%
Solid Waste	9,964,800	2.0%
OPEB	10,103,580	2.0%
Pension	3,222,980	0.6%
Airport	936,500	0.2%
Special Revenue	4,374,430	0.9%
Septage	913,700	0.2%
Firearms	155,500	0.0%
Fiber Network	270,000	0.1%
LOSAP	50,000	0.0%
Total	\$507,402,735	



Income Tax Collected-Operating

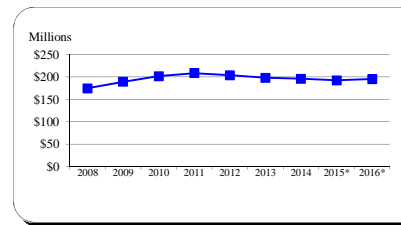
Year	Taxes Collected	% Change
2008	108,849,281	0.7%
2009	104,146,179	-4.3%
2010	99,652,702	-4.3%
2011	105,610,792	6.0%
2012	112,881,085	6.9%
2013	118,759,789	5.2%
2014	119,575,545	0.7%
2015*	122,430,000	2.4%
2016*	130,842,350	6.9%



Tax rate is currently 3.03%. The Board of County Commissioners lowered the current rate of 3.04% to 3.03% effective January 1, 2015. Typically, 9.09% of income tax revenue is directly appropriated to the CIP for school construction. In FY 16, the Commissioners temporarily reduced this amount to 7.09% with 2.0% going to Operating. Source: FY 08-FY 14 Carroll County CAFR, Schedule 1-1

Total Local Property Tax Collected

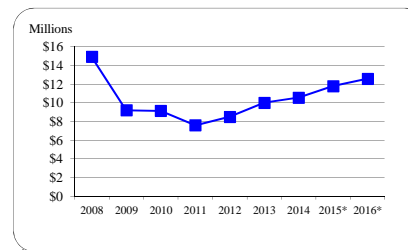
Year	Taxes Collected	% Change
2008	174,354,873	10.3%
2009	189,079,529	8.4%
2010	201,526,399	6.6%
2011	208,296,512	3.4%
2012	203,601,066	-2.3%
2013	197,727,477	-2.9%
2014	195,528,915	-1.1%
2015*	192,258,630	-1.7%
2016*	195,068,480	1.5%



The tax rate decreased from \$1.048 to \$1.028 for Real Property and from \$2.62 to \$2.57 for Personal Property in FY 12. The tax rate decreased to \$1.018 for Real Property and \$2.545 for Personal Property in FY 13. In FY 14, the Personal Property tax rate decreased to \$2.515. Source: FY 08-FY 14 Carroll County CAFR, Table 4

Recordation Tax Collected

Year	Base	% Change
2008	14,948,705	-33.6%
2009	9,220,249	-38.3%
2010	9,154,578	-0.7%
2011	7,612,907	-16.8%
2012	8,520,674	11.9%
2013	10,021,395	17.6%
2014	10,576,850	5.5%
2015*	11,800,000	11.6%
2016*	12,600,000	6.8%



Beginning in FY 04, tax rate increased from \$3.50 per \$500 to \$5.00 per \$500. Source: FY 08-FY 14 Carroll County CAFR, Table 4

* Indicates estimate or projection

Financial and Demographic Data

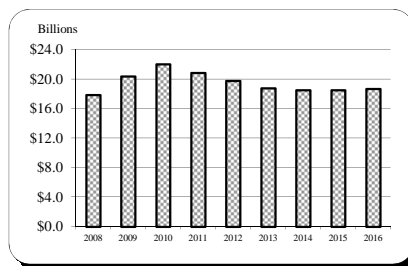
Assessable Base-Real and Personal Property

Year	Base	% Change
2008	17,902,568,898	15.9%
2009	20,409,412,280	14.0%
2010	22,066,168,625	8.1%
2011	20,895,165,478	-5.3%
2012	19,813,576,019	-5.2%
2013	18,789,765,921	-5.2%
2014	18,514,343,538	-1.5%
2015	18,535,135,000	0.1%
2016	18,703,215,000	0.9%

All years are expressed at 100% of assessed value.

Sources: FY 08-FY 14 Carroll County CAFR, Table 6

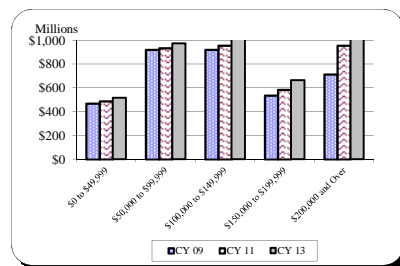
FY 15 Maryland State Department of Assessment and Taxation March 2015 Update



Net Taxable Income

Income Range	CY 09	CY 11	CY 13
\$0 to \$49,999	\$470,459,975	\$488,546,786	\$516,022,413
\$50,000 to \$99,999	921,616,675	936,254,995	973,283,163
\$100,000 to \$149,999	921,882,102	956,334,250	1,015,071,082
\$150,000 to \$199,999	537,136,195	585,765,152	664,060,141
\$200,000 and Over	714,387,650	956,867,597	1,104,418,012

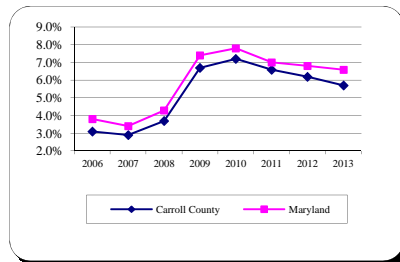
Source: Comptroller of Maryland Income Tax Summary Reports 2009-2013



Average Annual Unemployment Rates

Year	Carroll County	Maryland
2006	3.1%	3.8%
2007	2.9%	3.4%
2008	3.7%	4.3%
2009	6.7%	7.4%
2010	7.2%	7.8%
2011	6.6%	7.0%
2012	6.2%	6.8%
2013	5.7%	6.6%
2014	5.2%	5.9%

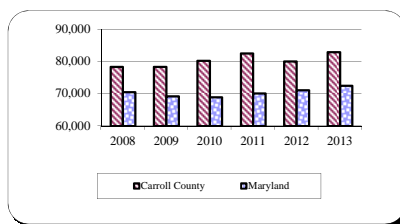
Source: MD Department of Labor, Licensing and Regulation



Median Household Income

Year	Carroll County	Maryland
2008	78,348	70,482
2009	78,418	69,193
2010	80,291	68,933
2011	82,553	70,075
2012	80,028	71,122
2013	82,955	72,483

Source: American Community Survey



* Indicates estimate or projection

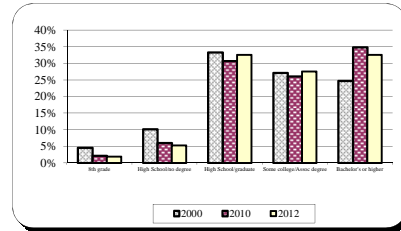
Financial and Demographic Data

Educational Attainment

	2000	2010	2012
Population 25+ years			
8th grade	4.6%	2.2%	1.9%
High School/no degree	10.1%	6.0%	5.3%
High School/graduate	33.3%	30.8%	32.6%
Some college/Assoc degree	27.2%	26.1%	27.6%
Bachelor's or higher	24.8%	34.9%	32.6%

Sources: US Census Bureau - 1990 & 2000 Census

US Census Bureau - 2012 American Community Survey

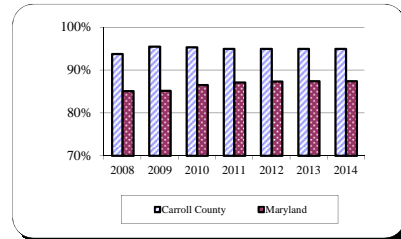


Graduation Rates

Year	Carroll County	Maryland
2008	93.8%	85.1%
2009	95.5%	85.2%
2010	95.3%	86.5%
2011	95.0%	87.1%
2012	95.0%	87.4%
2013	95.0%	87.4%
2014	95.0%	87.4%

Source: 2014 Maryland Report Card

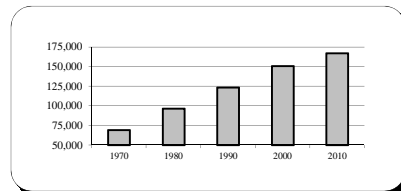
Note: The percentages represent the Leaver Graduation Rate. 95% in a category indicates ≥ 95 and corresponding counts have been suppressed.



Population

Year	Carroll County
April 1, 1970 Census	69,006
April 1, 1980 Census	96,356
April 1, 1990 Census	123,372
April 1, 2000 Census	150,897
April 1, 2010 Census	167,134

Source: US Census

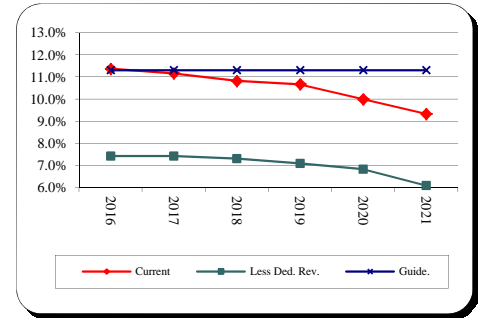


* Indicates estimate or projection

Financial and Demographic Data

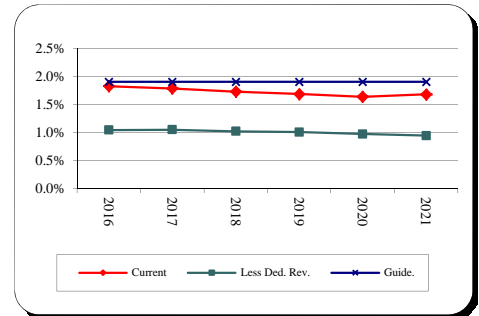
General Fund Debt Service/General Fund Revenue

<u>Fiscal Year</u>	<u>Current Position</u>	<u>Revenue and Supported D/S</u>	<u>County Guideline</u>
2016	11.4%	7.4%	11.3%
2017	11.2%	7.4%	11.3%
2018	10.8%	7.3%	11.3%
2019	10.7%	7.1%	11.3%
2020	10.0%	6.8%	11.3%
2021	9.3%	6.1%	11.3%



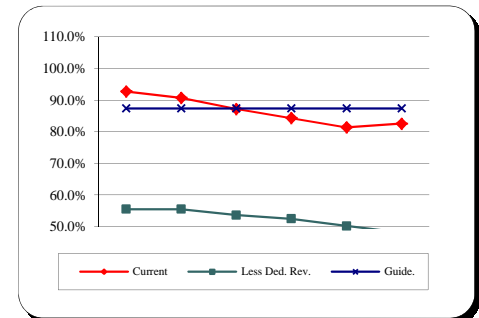
General Fund Debt/Assessable Base

<u>Fiscal Year</u>	<u>Current Position</u>	<u>Revenue and Supported Debt</u>	<u>County Guideline</u>
2016	1.82%	1.04%	1.90%
2017	1.78%	1.05%	1.90%
2018	1.73%	1.02%	1.90%
2019	1.68%	1.01%	1.90%
2020	1.63%	0.97%	1.90%
2021	1.68%	0.94%	1.90%



General Fund Debt/General Fund Revenue

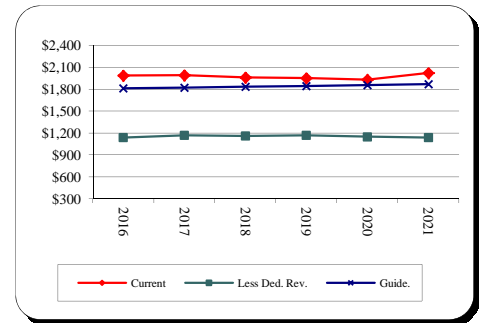
<u>Fiscal Year</u>	<u>Current Position</u>	<u>Revenue and Supported Debt</u>	<u>County Guideline</u>
2016	92.8%	55.5%	87.4%
2017	90.7%	55.5%	87.4%
2018	87.2%	53.7%	87.4%
2019	84.4%	52.5%	87.4%
2020	81.4%	50.2%	87.4%
2021	82.6%	48.1%	87.4%



Financial and Demographic Data

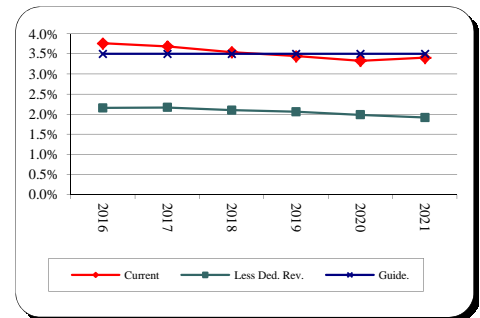
General Fund Debt/Capita

<u>Fiscal Year</u>	<u>Current Position</u>	<u>Revenue and Supported Debt</u>	<u>County Guideline</u>
2016	1,986	1,138	1,811
2017	1,992	1,170	1,822
2018	1,961	1,161	1,834
2019	1,951	1,167	1,845
2020	1,930	1,149	1,856
2021	2,023	1,137	1,868



General Fund Debt/Personal Income

<u>Fiscal Year</u>	<u>Current Position</u>	<u>Revenue and Supported Debt</u>	<u>County Guideline</u>
2016	3.8%	2.2%	3.5%
2017	3.7%	2.2%	3.5%
2018	3.5%	2.1%	3.5%
2019	3.4%	2.1%	3.5%
2020	3.3%	2.0%	3.5%
2021	3.4%	1.9%	3.5%



Total Debt Service/General Fund Revenue

<u>Fiscal Year</u>	<u>Current Position</u>	<u>Less Ded. Rev. Revenue and Supported DS</u>	<u>Guide. County Guideline</u>
2016	12.0%	7.4%	12.0%
2017	11.8%	7.4%	12.0%
2018	11.4%	7.3%	12.0%
2019	11.2%	7.1%	12.0%
2020	10.4%	6.8%	12.0%
2021	9.7%	6.1%	12.0%

