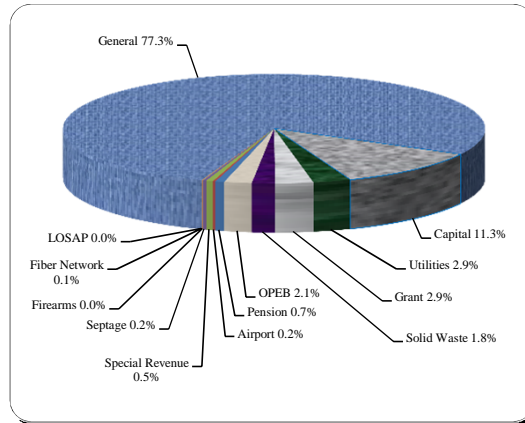


Financial and Demographic Data

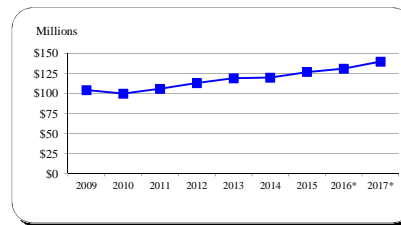
FY 17 Budget By Fund

Fund Type	FY 17	% of Total
General	\$388,407,000	77.3%
Capital	56,917,665	11.3%
Utilities	14,538,635	2.9%
Grant	14,641,680	2.9%
Solid Waste	8,815,806	1.8%
OPEB	10,578,580	2.1%
Pension	3,434,760	0.7%
Airport	954,220	0.2%
Special Revenue	2,666,620	0.5%
Septage	1,173,300	0.2%
Firearms	155,500	0.0%
Fiber Network	401,000	0.1%
LOSAP	100,000	0.0%
Total	\$502,784,766	



Income Tax Collected-Operating

Year	Taxes Collected	% Change
2009	104,146,179	-4.3%
2010	99,652,702	-4.3%
2011	105,610,792	6.0%
2012	112,881,085	6.9%
2013	118,759,789	5.2%
2014	119,575,545	0.7%
2015	126,688,154	5.9%
2016*	130,842,350	3.3%
2017*	139,692,655	6.8%

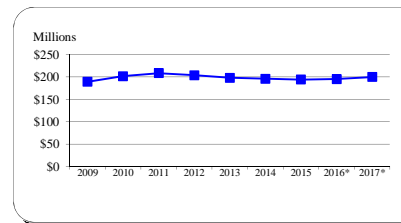


Tax rate is currently 3.03%. The Board of County Commissioners lowered the current rate of 3.04% to 3.03% effective January 1, 2015.

Typically, 9.09% of income tax revenue is directly appropriated to the CIP for school construction. In FY 16, the Commissioners temporarily reduced this amount to 7.09% with 2.0% going to Operating. Source: FY 15 Carroll County CAFR, Schedule 1-1

Total Local Property Tax Collected

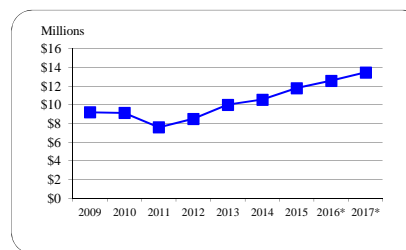
Year	Taxes Collected	% Change
2009	189,079,529	8.4%
2010	201,526,399	6.6%
2011	208,296,512	3.4%
2012	203,601,066	-2.3%
2013	197,727,477	-2.9%
2014	195,528,915	-1.1%
2015	194,029,688	-0.8%
2016*	195,068,480	0.5%
2017*	199,647,417	2.3%



The tax rate decreased from \$1.048 to \$1.028 for Real Property and from \$2.62 to \$2.57 for Personal Property in FY 12. The tax rate decreased to \$1.018 for Real Property and \$2.545 for Personal Property in FY 13. In FY 14, the Personal Property tax rate decreased to \$2.515. Source: FY 15 Carroll County CAFR, Table 4

Recordation Tax Collected

Year	Base	% Change
2009	9,220,249	-38.3%
2010	9,154,578	-0.7%
2011	7,612,907	-16.8%
2012	8,520,674	11.9%
2013	10,021,395	17.6%
2014	10,576,850	5.5%
2015	11,800,000	11.6%
2016*	12,600,000	6.8%
2017*	13,500,000	7.1%



Source: FY 15 Carroll County CAFR, Table 4

* Indicates budgeted amount

Financial and Demographic Data

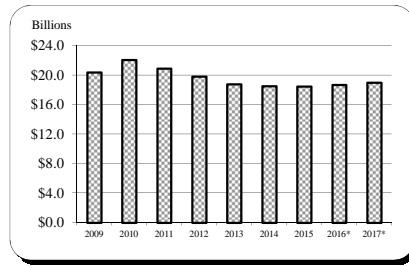
Assessable Base-Real and Personal Property

Year	Base	% Change
2009	20,421,064,497	14.1%
2010	22,077,626,050	8.1%
2011	20,907,114,686	-5.3%
2012	19,829,611,572	-5.2%
2013	18,808,823,173	-5.1%
2014	18,549,381,425	-1.4%
2015	18,495,548,665	-0.3%
2016*	18,688,384,000	1.0%
2017*	19,016,100,000	1.8%

All years are expressed at 100% of assessed value.

Sources: FY 09-FY 15 Carroll County CAFR, Table 6

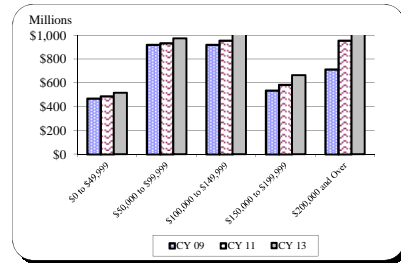
FY 16-FY 17 Maryland State Department of Assessment and Taxation November 2015 Update



Net Taxable Income

Income Range	CY 09	CY 11	CY 13
\$0 to \$49,999	\$470,459,975	\$488,546,786	\$516,022,413
\$50,000 to \$99,999	921,616,675	936,254,995	973,283,163
\$100,000 to \$149,999	921,882,102	956,334,250	1,015,071,082
\$150,000 to \$199,999	537,136,195	585,765,152	664,060,141
\$200,000 and Over	714,387,650	956,867,597	1,104,418,012

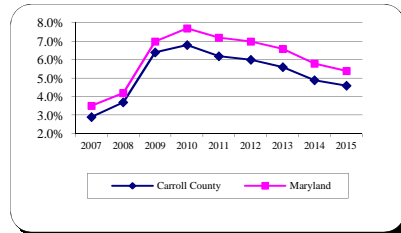
Source: Comptroller of Maryland Income Tax Summary Reports 2009-2013



Average Annual Unemployment Rates

Year	Carroll County	Maryland
2007	2.9%	3.5%
2008	3.7%	4.2%
2009	6.4%	7.0%
2010	6.8%	7.7%
2011	6.2%	7.2%
2012	6.0%	7.0%
2013	5.6%	6.6%
2014	4.9%	5.8%
2015	4.6%	5.4%

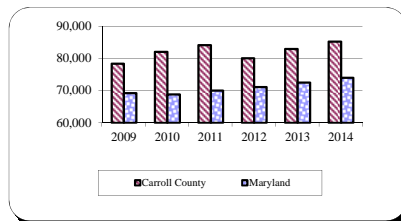
Source: MD Department of Labor, Licensing and Regulation



Median Household Income

Year	Carroll County	Maryland
2009	78,418	69,193
2010	82,077	68,854
2011	84,117	70,004
2012	80,028	71,122
2013	82,955	72,483
2014	85,274	73,971

Source: U.S. Census Bureau, American Community Survey



* Indicates budgeted amount

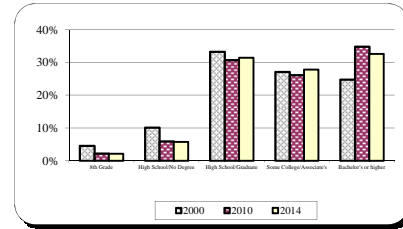
Financial and Demographic Data

Educational Attainment

	2000	2010	2014
Population 25+ years			
8th Grade	4.6%	2.2%	2.1%
High School/No Degree	10.1%	6.0%	5.8%
High School/Graduate	33.3%	30.8%	31.5%
Some College/Associate's	27.2%	26.1%	27.9%
Bachelor's or higher	24.8%	34.9%	32.7%

Sources: US Census Bureau - 2000, 2010 Census

US Census Bureau - 2015 American Community Survey



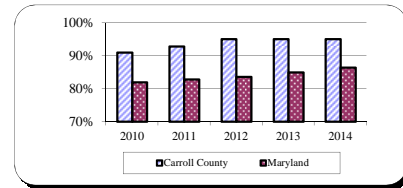
Graduation Rates

Year	Carroll County	Maryland
2010	91.0%	82.0%
2011	92.8%	82.8%
2012	95.0%	83.6%
2013	95.0%	85.0%
2014	95.0%	86.4%

Source: 2014 Maryland Report Card

Note: The percentages represent the 4 Year Adjusted Cohort Rate.

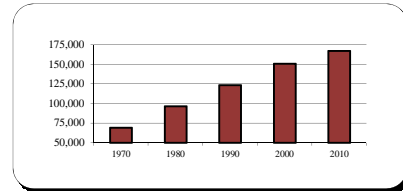
95% in a category indicates >95 and corresponding counts have been suppressed.



Population

Year	Carroll County
April 1, 1970 Census	69,006
April 1, 1980 Census	96,356
April 1, 1990 Census	123,372
April 1, 2000 Census	150,897
April 1, 2010 Census	167,134

Source: US Census

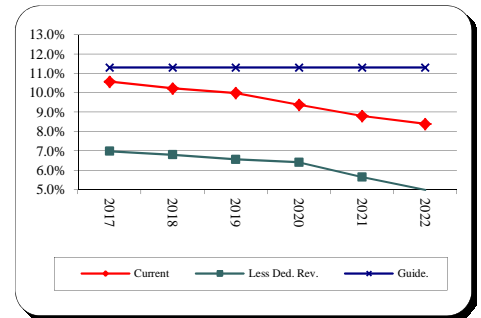


* Indicates budgeted amount

Financial and Demographic Data

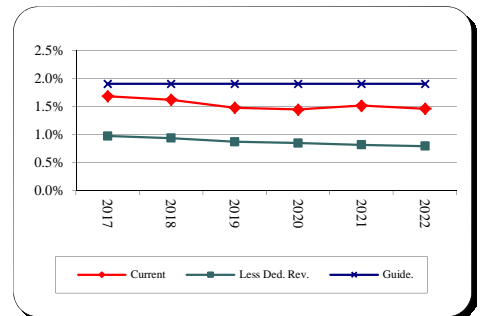
General Fund Debt Service/General Fund Revenue

<u>Fiscal Year</u>	<u>Current Position</u>	<u>Revenue and Supported D/S</u>	<u>County Guideline</u>
2017	10.6%	7.0%	11.3%
2018	10.2%	6.8%	11.3%
2019	10.0%	6.6%	11.3%
2020	9.4%	6.4%	11.3%
2021	8.8%	5.7%	11.3%
2022	8.4%	5.0%	11.3%



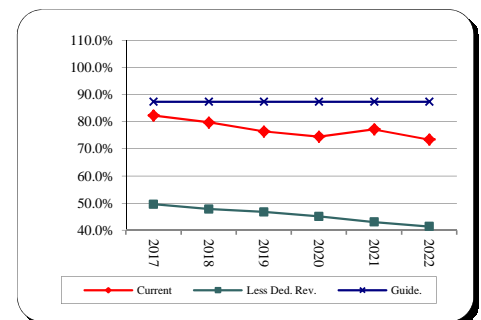
General Fund Debt/Assessable Base

<u>Fiscal Year</u>	<u>Current Position</u>	<u>Revenue and Supported Debt</u>	<u>County Guideline</u>
2017	1.68%	0.97%	1.90%
2018	1.62%	0.93%	1.90%
2019	1.48%	0.87%	1.90%
2020	1.44%	0.85%	1.90%
2021	1.51%	0.81%	1.90%
2022	1.46%	0.79%	1.90%



General Fund Debt/General Fund Revenue

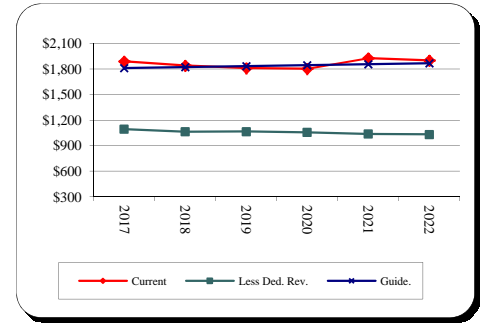
<u>Fiscal Year</u>	<u>Current Position</u>	<u>Revenue and Supported Debt</u>	<u>County Guideline</u>
2017	82.3%	49.5%	87.4%
2018	79.8%	47.8%	87.4%
2019	76.5%	46.7%	87.4%
2020	74.5%	45.1%	87.4%
2021	77.2%	43.0%	87.4%
2022	73.5%	41.4%	87.4%



Financial and Demographic Data

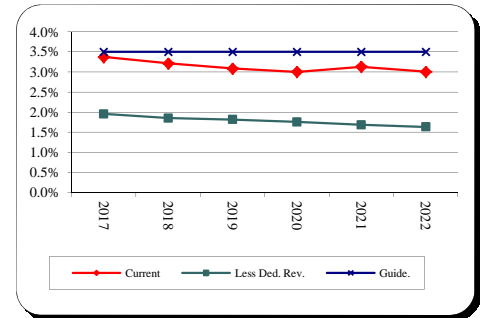
General Fund Debt/Capita

<u>Fiscal Year</u>	<u>Current Position</u>	<u>Revenue and Supported Debt</u>	<u>County Guideline</u>
2017	1,889	1,093	1,811
2018	1,841	1,062	1,822
2019	1,810	1,065	1,834
2020	1,802	1,055	1,845
2021	1,928	1,038	1,856
2022	1,900	1,031	1,868



General Fund Debt/Personal Income

<u>Fiscal Year</u>	<u>Current Position</u>	<u>Revenue and Supported Debt</u>	<u>County Guideline</u>
2017	3.4%	2.0%	3.5%
2018	3.2%	1.9%	3.5%
2019	3.1%	1.8%	3.5%
2020	3.0%	1.8%	3.5%
2021	3.1%	1.7%	3.5%
2022	3.0%	1.6%	3.5%



Total Debt Service/General Fund Revenue

<u>Fiscal Year</u>	<u>Current Position</u>	<u>Less Ded. Rev. Revenue and Supported DS</u>	<u>County Guideline</u>
2017	11.4%	7.0%	12.0%
2018	11.1%	6.8%	12.0%
2019	10.9%	6.6%	12.0%
2020	10.3%	6.4%	12.0%
2021	9.7%	5.7%	12.0%
2022	9.3%	5.0%	12.0%

