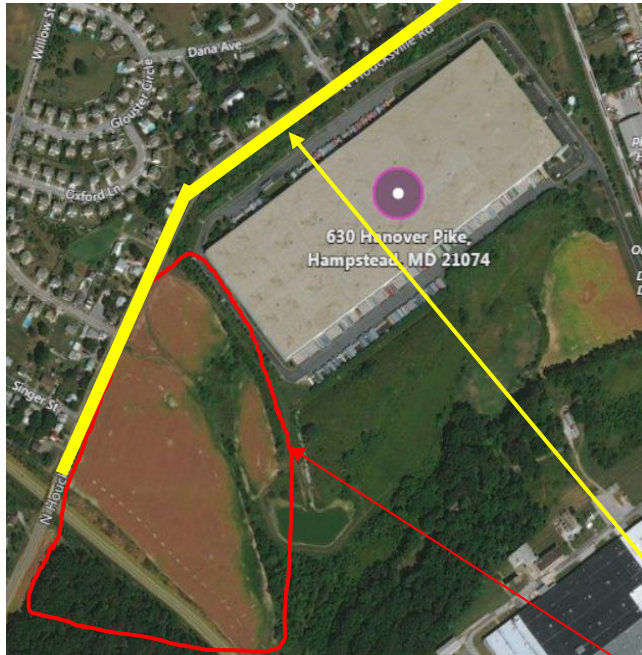


Hampstead Distribution Center

1



- Built in 2000
- Lease expiration: 2020
- 1.034 million sq. ft.
- 85 dock doors
- Receive/Warehouse/Distribute Dart Container Finished Goods (no manufacturing on premises)
- Part of the 2.9 SAP Release in 10/2017
- 12,000 Fueling Tank for Dedicated Fleet
- 90% Bulk Storage/10% Rack Storage
- 75% Customer Freight, 25% Internal Freight
- 2018 AIB Audit Score: 965/1000
- Onsite Foam collection receptacle
- Annual roadside clean up on Hocksville Rd.
- ~70 Dart owned acres adjacent to the facility



Facility Staffing

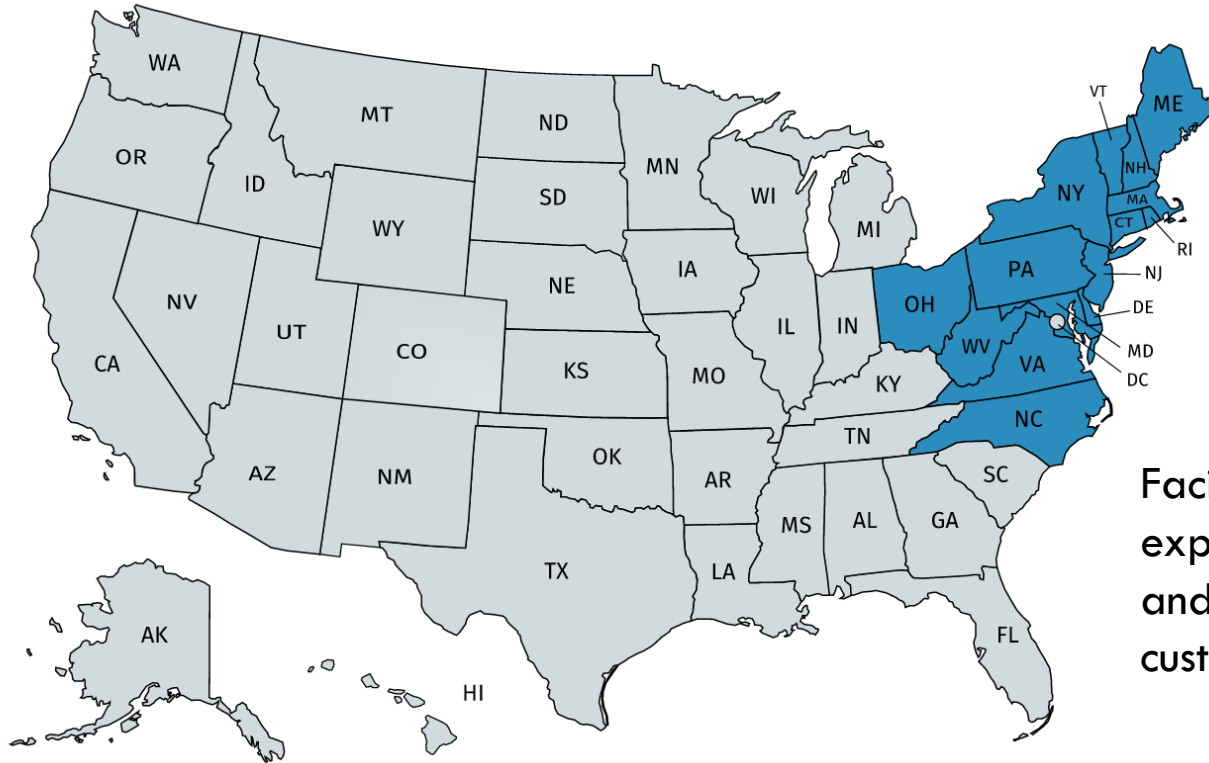
2

Hampstead

□ Hourly F/T	64
□ Salary F/T	4
□ Total F/T	68
□ Agency Temps FTE	1
□ Plant Total	69



Hampstead Primary Service Area



Facility does also export to Dart UK and international customers

