

Best Management Practices & Good Housekeeping Measures

Steve Miller
Town Manager, Town of Manchester

January 5, 2016



WORKSHOP: CARROLL COUNTY
BUSINESSES FOR CLEAN WATER

Steve's Background

Stormwater Management as it relates to...

- Town of Manchester
- Fire Department



WORKSHOP: CARROLL COUNTY
BUSINESSES FOR CLEAN WATER

Best Management Practices (BMPs)

- What are they?
- How do they relate to your business?

BMPs are control measures taken to mitigate changes to both quantity and quality of urban runoff caused by changes to land use or activities on the land.

In other words... using common sense!



Good Housekeeping Measures

- What does “good housekeeping measures” mean?
- Examples
 - Neat and orderly work area
 - Tightly closed unused containers
 - Drip pans for drips and spills



Outdoor Materials Storage

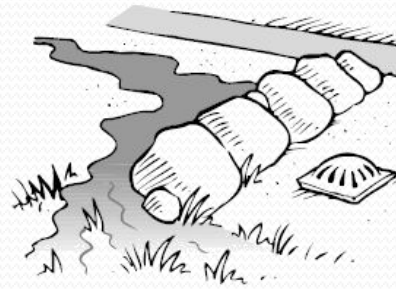
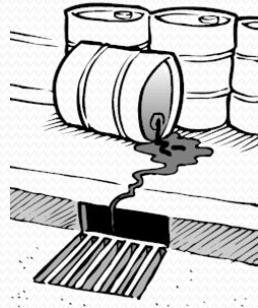
- Store materials out of rainfall; keep lids tight and labeled
- Avoid loading/unloading in poor weather



Source: Wastenaw County Drain Commission,
Community Partners for Clean Streams, 1996

Spill Response

- Never hose down a spill into street, ditch, or storm drain
- Sweep or absorb spills (dry clean-up)
- Block spills from reaching storm drains
- Clean up absorbents and dispose of properly



Source: Wastenaw County Drain Commission, Community Partners for Clean Streams, 1996

Vehicle & Equipment Fueling,

Repair, & Washing

- Stay with vehicle while fueling
- Move leaking vehicles indoors
- Use drip pan to catch temporary leaks until repaired
- Create containment area for washing & maintenance



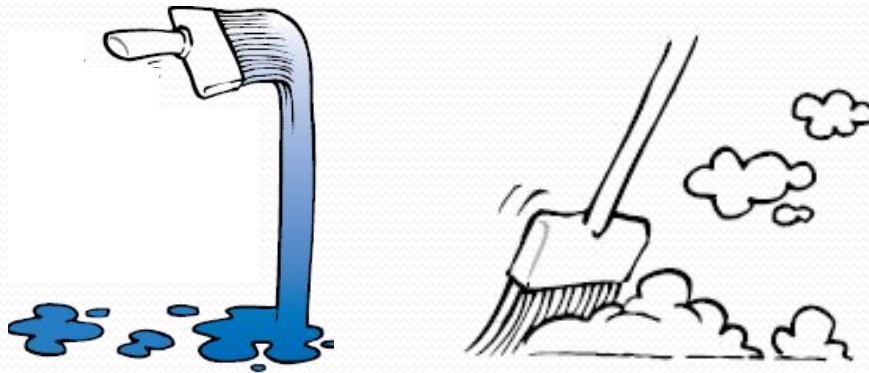
Source: Wastenaw County Drain Commission,
Community Partners for Clean Streams, 1996



WORKSHOP: CARROLL COUNTY
BUSINESSES FOR CLEAN WATER

Outdoor Manufacturing & Maintenance

- Use drop cloth to catch dust & scraps (ex. paint)
- Sweep scrap, drips, & residues after each shift



*Source: Wastewaw County Drain Commission,
Community Partners for Clean Streams, 1996*

Waste Management

- Never use storm drains for waste disposal, including yard and landscaping waste
- Keep lid closed at all times on waste containers
- Avoid and report illegal dumping



*Source: Wastenaw County Drain Commission,
Community Partners for Clean Streams, 1996*



**WORKSHOP: CARROLL COUNTY
BUSINESSES FOR CLEAN WATER**

Fats, Oils, & Grease (FOG)



- Manage kitchen grease
- Trash/recycling storage and handling
- Control outdoor washing activities

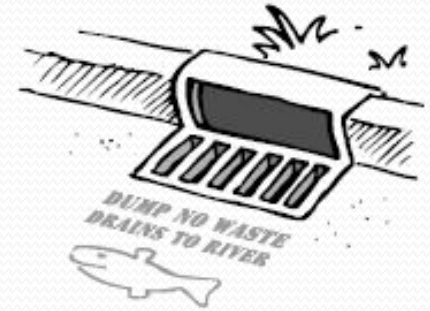
Source: Wastenaw County Drain Commission,
Community Partners for Clean Streams, 1996



WORKSHOP: CARROLL COUNTY
BUSINESSES FOR CLEAN WATER

What has Town of Manchester done?

- Public education
- Working with businesses
- Working with fire department
- Community group involvement



Source: Wastewater County Drain Commission,
Community Partners for Clean Streams, 1996

Stormwater management = public utility



WORKSHOP: CARROLL COUNTY
BUSINESSES FOR CLEAN WATER

Questions?



**WORKSHOP: CARROLL COUNTY
BUSINESSES FOR CLEAN WATER**