



Carroll County Agricultural Land Preservation

Within Department of
Planning & Land Management

As of October 25, 2024

Accomplishments

- #1 in Maryland for number of acres preserved
- #2 in US for acres preserved through easement purchase (as of 2020)
- Top 5 in US for similar programs administered by local governments
- 2021 Maryland Sustainable Growth Award for Preservation and Conservation



Responsibility Highlights

- Code Chapter 159
- Administration of four voluntary, permanent land preservation programs
- Support and facilitate Agricultural Land Preservation Advisory Board

Ag Pres Programs Available in Carroll County

- Maryland Agricultural Land Preservation Foundation (MALPF) Program
- Carroll County Easement Purchase Program
- Rural Legacy Program
- Critical Farms Program (MALPF)

50% of Carroll County's land mass is in agricultural use



Carroll County ranks **1st** in Maryland for number of acres preserved



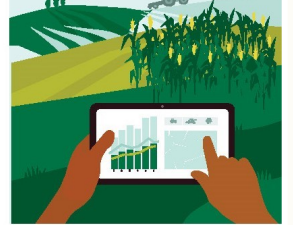
Agriculture is Carroll's **#1** industry



Carroll County aims to preserve **100,000** acres of farmland minimum
Carroll expects to reach **80,000+** acres permanently preserved in 2024



Every **\$1** invested in Ag Pres stimulates \$1.80 - \$2.00 in economic benefit to community



Carroll County ranks **3rd** in Maryland for production of sheep, goats, wool, mohair, and milk



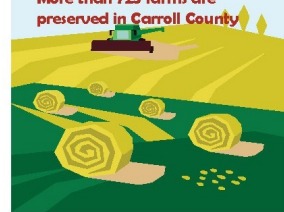
Carroll County ranks **1st** in Maryland for number of cut Christmas tree farms with **20** farms



Carroll County ranks **#3** in the state for sales of milk from cows



Carroll County ranks **2nd** in the U.S. for number of acres preserved through easement purchase
More than **723** farms are preserved in Carroll County



Ag products sold in Carroll County valued at **\$110 million** annually



Ag Pres Story

- Interactive story and maps
- Facts, history, accomplishments, photos, etc.



<https://arccg.is/1fGWW8>

Cont@ct Us

Program Manager—JP Smith, Jr.

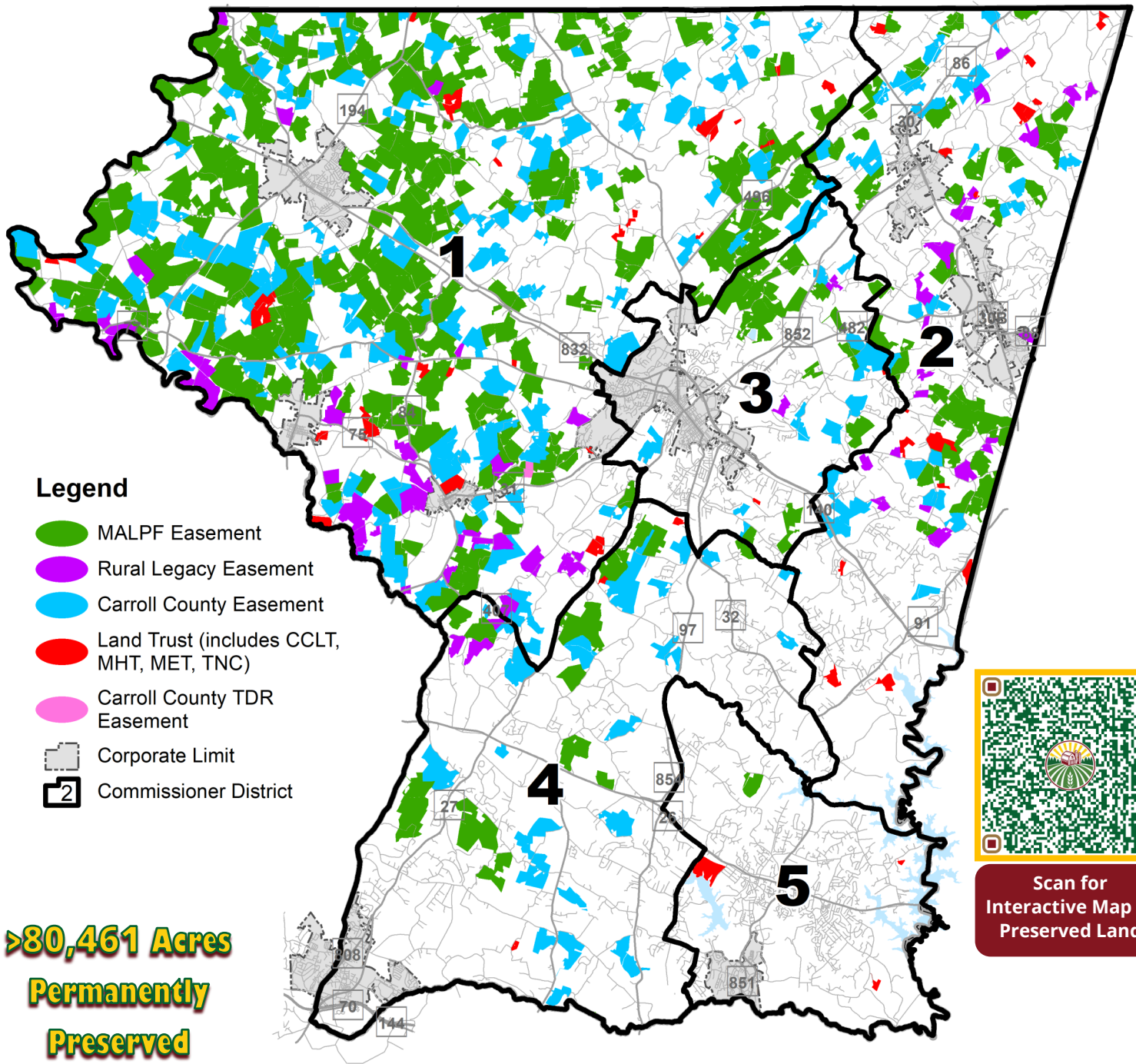
↳ Preservation Specialist—Jackie Brathuhn

↳ Office Technician—Donna Black

Phone: 410-386-2214

Email: CarrollAgPres@CarrollCountyMD.gov

Website: carrollcountymd.gov/AgPres



Legend

- MALPF Easement
- Rural Legacy Easement
- Carroll County Easement
- Land Trust (includes CCLT, MHT, MET, TNC)
- Carroll County TDR Easement
- Corporate Limit
- Commissioner District

**>80,461 Acres
Permanently
Preserved**



Scan for
Interactive Map of
Preserved Land

Agricultural Land Preserved (as of 10/1/2024)



Program	Acres	# of Farms
MALPF (includes Critical Farms)	46,910	411
Carroll County	25,482	233
Rural Legacy	5,507	70
Land Trusts, Conservancies, Other	2,562	49
TOTALS	80,461	763



Carroll Ag Pres

Note: Data as of October 1, 2024. Colors correspond to map, Land Trust acreage includes 1 TDR easement of 52 acres.