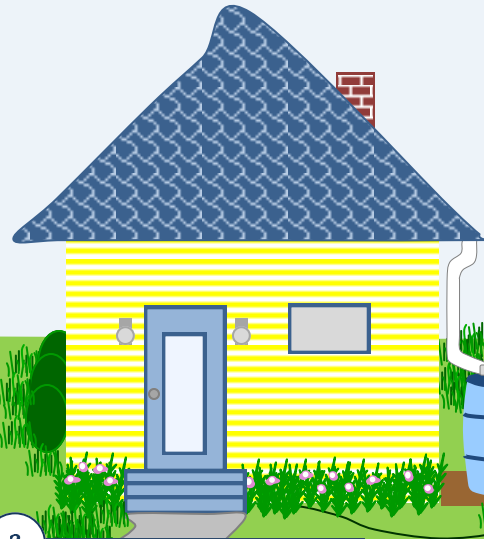


Rain Barrels

Pesticides

Car Wash



1 No Rain, No Gain
A rain barrel is a container that catches rain water from a downspout. Rain barrels reduce the amount of stormwater runoff by collecting runoff and storing it for future use.

2 Ease the Flow
Rain barrels help reduce the peak volume and velocity of runoff that would otherwise erode the banks of lakes and rivers, and even your front yard!

3 Recycle & Reuse
Rainwater captured in a rain barrel can be used to water lawns and gardens. Just be careful. rain barrel water is NOT suitable for drinking!

4 The presence of pesticides in stormwater runoff directly impacts the health of groundwater, streams, and aquatic life, and can present a threat to human drinking water supplies.

5 Integrated Pest Management uses holistic approaches to pest control by attempting to manage them at an acceptable level instead of eliminating them.

6 Dos and Don'ts of Pesticide Use

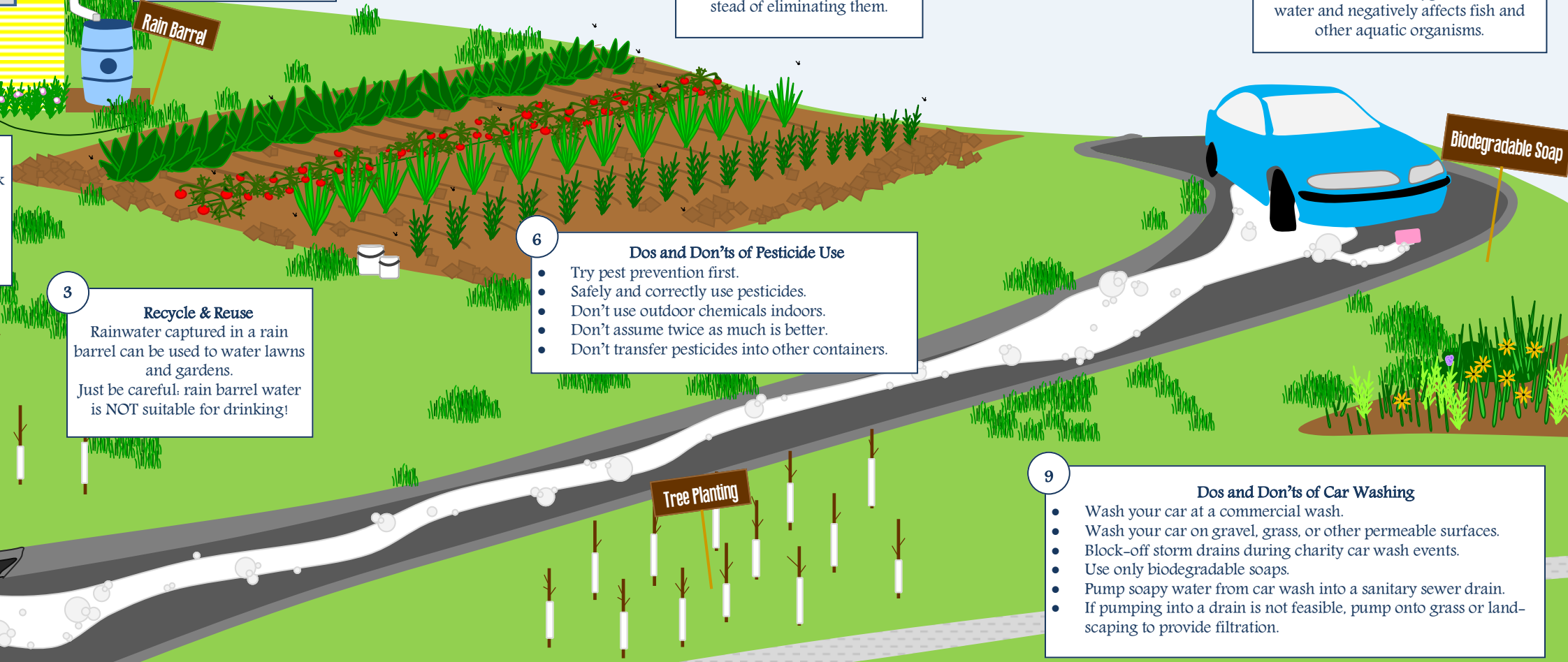
- Try pest prevention first.
- Safely and correctly use pesticides.
- Don't use outdoor chemicals indoors.
- Don't assume twice as much is better.
- Don't transfer pesticides into other containers.

7 Workin' at the Carwash
When you wash your car, most of the dirt that comes off the vehicle contains pollutants and flows directly into storm drains and into local streams.

8 Clean is Not Always Green
Carwash runoff promotes weed and algae growth in streams, lakes, and estuaries, which reduces oxygen levels in the water and negatively affects fish and other aquatic organisms.

9 Dos and Don'ts of Car Washing

- Wash your car at a commercial wash.
- Wash your car on gravel, grass, or other permeable surfaces.
- Block-off storm drains during charity car wash events.
- Use only biodegradable soaps.
- Pump soapy water from car wash into a sanitary sewer drain.
- If pumping into a drain is not feasible, pump onto grass or landscaping to provide filtration.



Green Landscape

Pet Care

Recipes

for a

CLEANER GREENER

WATERWAY

11

Go Green or Go Home

Green pavers provide a permeable surface that filtrates rainwater and helps slow the velocity of runoff. Pavers can be used for sidewalks, driveways, patios, parking lots, and trails.

10

Make Like a Tree

And help improve the health of our streams! Trees clean the air, slow runoff velocity, reduce erosion, regulate stream temperature, and provide habitat for animals. Planting trees in your neighborhood can help filter runoff from houses, driveways, and other impervious surfaces in your neighborhood!

13

Haste Makes Waste

Studies have proven that 20 percent of fecal coliform found in urban stormwater areas is attributed to dog waste.

14

Somethin' Smells Fishy

Pet waste decay releases nutrients that promote weed and algae growth in water ways, causing limited light penetration and therefore affected growth of aquatic vegetation, fish, and other aquatic organisms.

12

Rain Gardens provide infiltration of nutrients and sediment from impermeable surfaces such as roofs, sidewalks, and driveways.

15

Educate your children about the dangers of pet waste and the responsibilities of pet ownership.

