

# Zoning Map 68



## Zoning Districts

### Residential District

- R-40,000
- R-20,000
- R-10,000
- R-7,500

### Commercial District

- C-1
- C-2
- C-3
- I-1
- I-2
- Employment Campus

### Resource District

- Heritage
- Agriculture
- Conservation

### Overlays

#### Mineral Resource Overlay

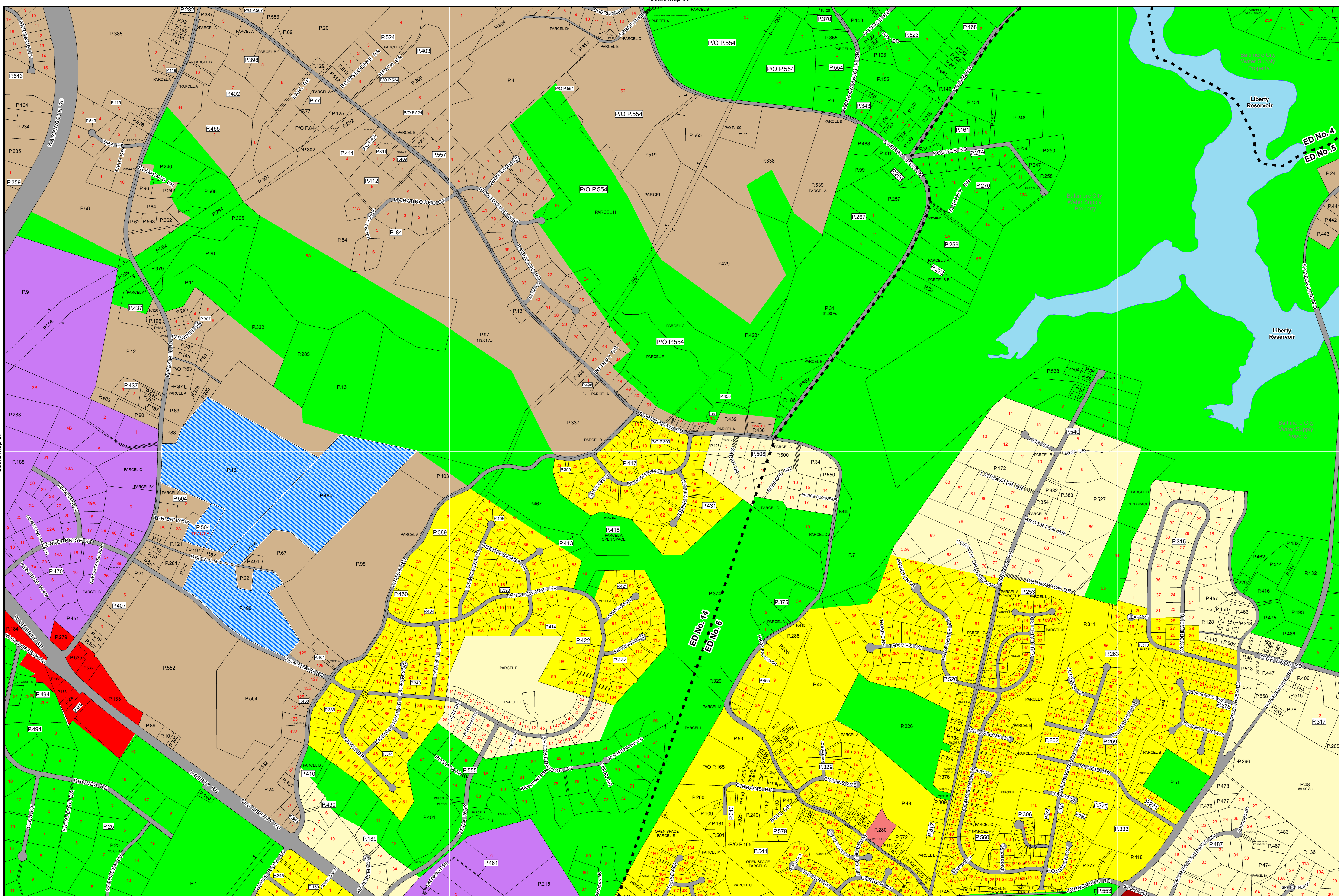
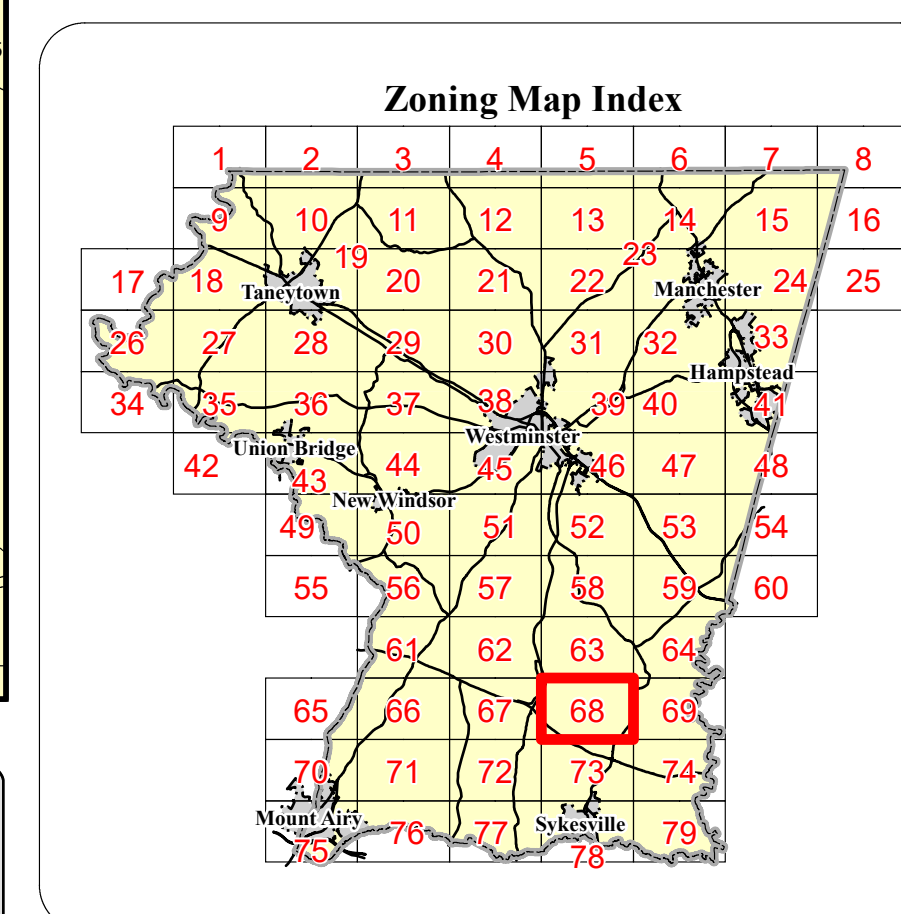
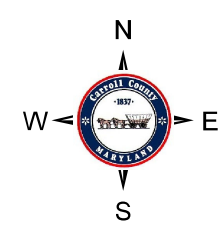
- MR (Recovery Area)
- VRA (Viable Resource Area)
- MRN (Notification Area)

#### Historic District Overlay

- Historic District Overlay

#### General

- County Border
- Corporate Limits
- Parcel Boundary
- Railroad
- Election District Boundary
- Rural Villages



Rev. #	MA #	Date	Description	Rev. #	MA #	Date	Description
9.	Res. 909-2014	12/15/2013	Rezoning Case #219	18.			
8.	ORD 08-08	10/9/2008	Rezoning Case #211	17.			
7.	MA	2/22/2007	Ordinance No. 07-04	16.			
6.	MA	11/21/2002	Ordinance No. 02-17	15.			
5.	MA 217	12/9/1992	Rezoning Case #180	14.			
4.	MA 149	11/7/1985	Rezoning Case #141	13.			
3.	MA 98	6/26/1980	Rezoning Case #177	12.			
2.	MA 73	9/23/1976	Rezoning Case #77	11.	Ord. 2021-01	1/14/2021	Comprehensive Rezoning
1.	MA 68	11/7/1974	Rezoning Case #67	10.	Ord. 19-08	12/12/2019	Comprehensive Rezoning

**Joins Map 73**

The information contained on this map is not to be construed or used as a "legal description" and is not a survey product. While Carroll County strives to provide the best data possible, it does not provide any guaranty of accuracy or completeness regarding the map information. Where uncertainty exists in regards to the zoning districts, a determination by the Zoning Administrator may be required. Any errors or omissions should be reported to the Carroll County Department of Land and Resource Management GIS section. Mapping contact: LRM@carrollcountymd.gov or 410-386-2949. Zoning contact: zoningadministration@carrollcountymd.gov or 410-386-2980

Scale: 0 300 600 1,200 Feet

By Resolution of the County Commissioners of Carroll County, Maryland, a body corporate and politic of the State of Maryland

Map signed this \_\_\_\_\_ Day of \_\_\_\_\_, 20\_\_\_\_

Attest:  
Vivian Daly      Acting County Clerk

Edward C. Rothstein      President      C. Eric Bouchat      Commissioner

C. Richard Weaver      Vice-President      Dennis E. Frazier      Commissioner

Stephen A. Wantz      Commissioner

COUNTY COMMISSIONERS OF CARROLL COUNTY, MARYLAND

# Zoning Map 68