

Zoning Map 59



Zoning Districts

Residential District

- R-40,000
- R-20,000
- R-10,000
- R-7,500

Commercial District

- C-1
- C-2
- C-3
- I-1
- I-2

- Employment Campus

Resource District

- Heritage
- Agriculture
- Conservation

Overlays

Mineral Resource Overlay

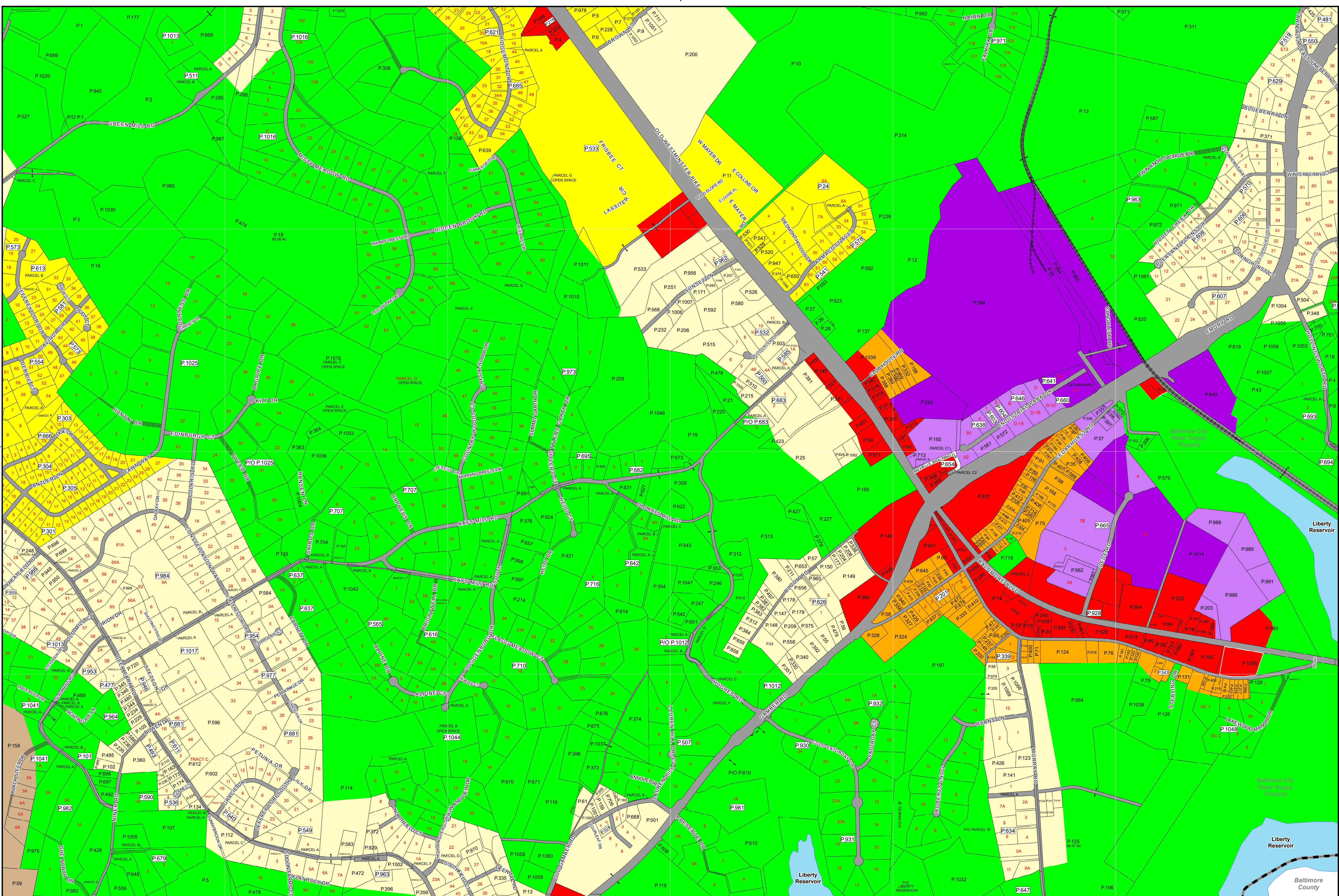
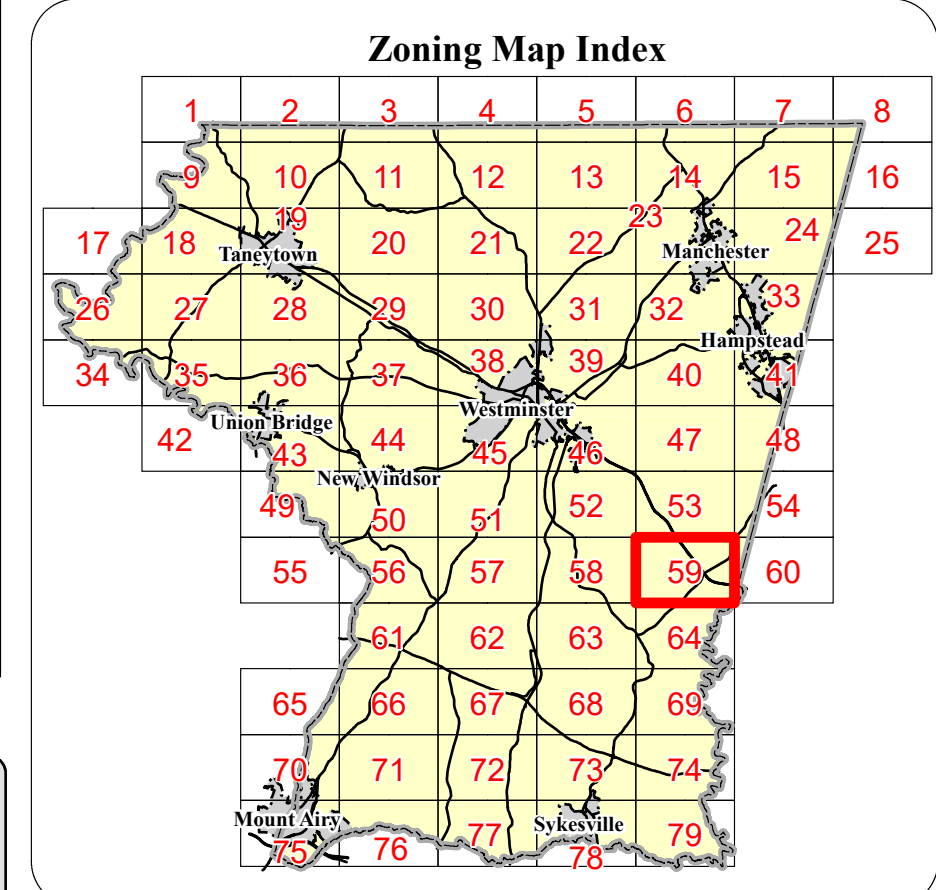
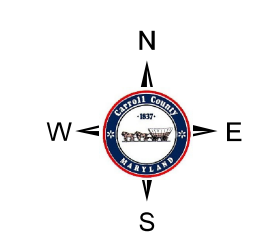
- MR (Recovery Area)
- VRA (Viable Resource Area)
- MRN (Notification Area)

Historic District Overlay

- Historic District Overlay

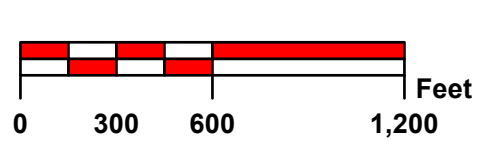
General

- County Border
- Corporate Limits
- Election District Boundary
- Parcel Boundary
- Railroad
- Rural Villages



Rev. #	MA #	Date	Description	Rev. #	MA #	Date	Description
9.	Res. 9-8-2014	12/29/2013	Rezoning Case #220	18.			
8.		12/5/2013	Ordinance No. 2013-12	17.			
7.		11/21/2002	Ordinance No. 02-17	16.			
6.	MA 204	10/24/1991	Rezoning Case #176	15.			
5.	MA 200	8/19/1991	Rezoning Case #175	14.			
4.	MA 176	9/27/1988	Rezoning Case #151	13.			
3.	MA 143	8/27/1985	Rezoning Case #135	12.			
2.	MA 74	12/1/1976	Rezoning Case #83	11.	Ord. 2021-01	1/14/2021	Comprehensive Rezoning
1.	MA 51	6/13/1972	Rezoning Case #48	10.	Ord. 19-08	12/12/2019	Comprehensive Rezoning

Joins Map 64
 The information contained on this map is not to be construed or used as a "legal description" and is not a survey product. While Carroll County strives to provide the best data possible, it does not provide any warranty of accuracy or completeness regarding the map information. Where uncertainty exists in regards to the zoning districts, a determination by the Zoning Administrator may be required. Any errors or omissions should be reported to the Carroll County Department of Land and Resource Management GIS section. Mapping contact: LRM@carrollcountymd.gov or 410-386-2949. Zoning contact: zoningadministration@carrollcountymd.gov or 410-386-2980



By Resolution of the County Commissioners of Carroll County, Maryland, a body corporate and politic of the State of Maryland

Map signed this _____ Day of _____, 20____

Attest:
 Vivian Daly Acting County Clerk

Edward C. Rothstein President
 C. Eric Bouchat Commissioner

C. Richard Weaver Vice-President
 Dennis E. Frazier Commissioner

Stephen A. Wantz Commissioner

COUNTY COMMISSIONERS OF CARROLL COUNTY, MARYLAND

Zoning Map 59