

**Zoning Map 58**



**Zoning Districts**

**Residential District**

- R-40,000
- R-20,000
- R-10,000
- R-7,500

**Commercial District**

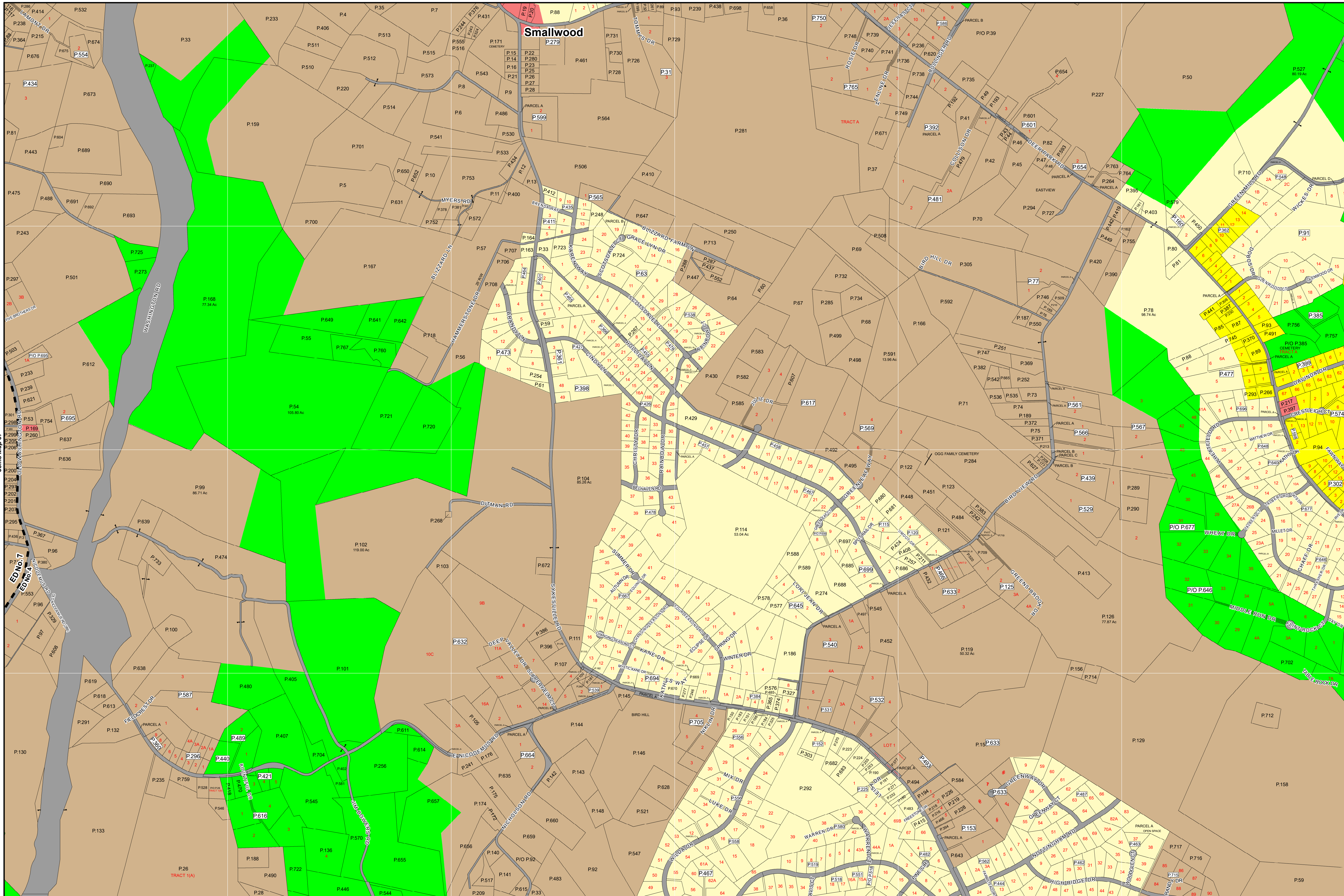
- C-1
- C-2
- C-3
- I-1
- I-2

**Resource District**

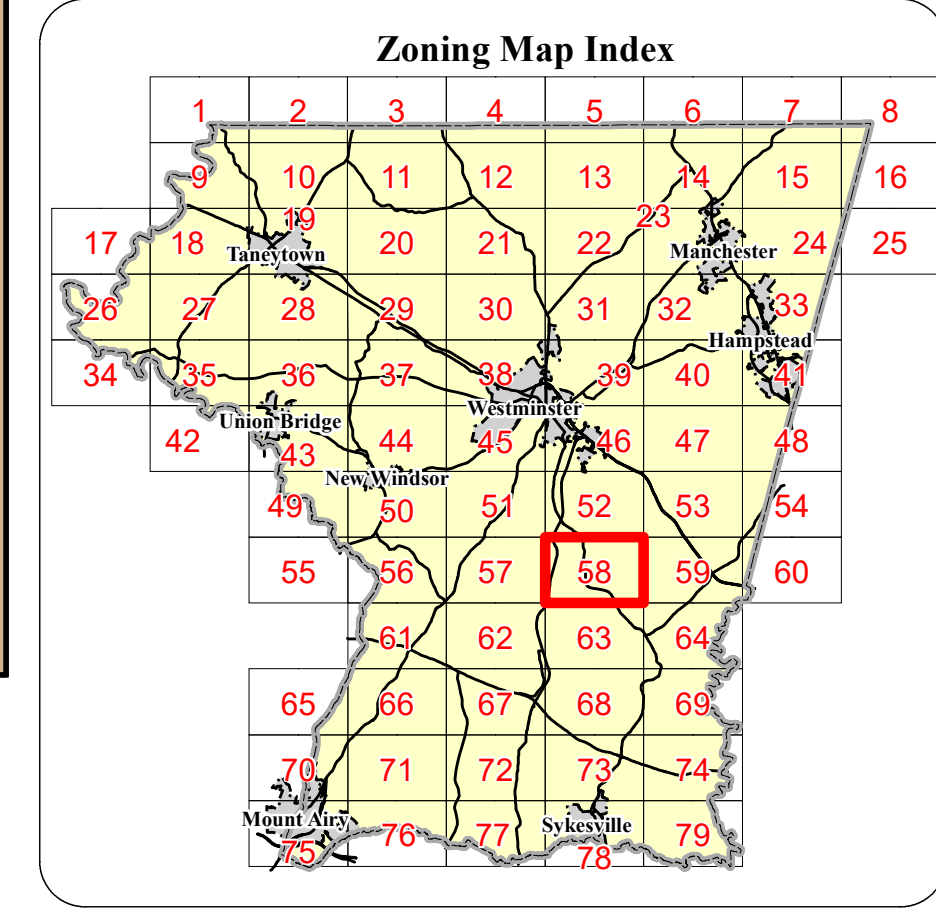
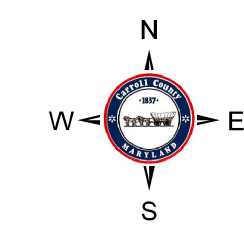
- Heritage
- Agriculture
- Conservation

**Overlays**

- Mineral Resource Overlay**
- MR (Recovery Area)
  - VRA (Viable Resource Area)
  - MRN (Notification Area)
- Historic District Overlay**
- Historic District Overlay
- General**
- County Border
  - Corporate Limits
  - Election District Boundary
  - Parcel Boundary
  - Railroad



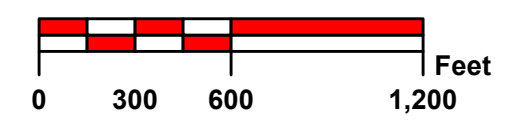
65 day suit



Rev. #	MA #	Date	Description	Rev. #	MA #	Date	Description
9.				18.			
8.				17.			
7.				16.			
6.				15.			
5.				14.			
4.	Ord. 19-08	12/12/2019	Comprehensive Rezoning	13.			
3.	Res. 873-12	12/13/2012	Rezoning Case #217	12.			
2.	MA 209	4/7/1992	Rezoning Case #182	11.			
1.	MA 197	7/1/1991	Rezoning Case #178	10.			

The information contained on this map is not to be construed or used as a "legal description" and is not a survey product. While Carroll County strives to provide the best data possible, it does not provide any guaranty of accuracy or completeness regarding the map information. Where uncertainty exists in regards to the zoning districts, a determination by the Zoning Administrator may be required.

Any errors or omissions should be reported to the Carroll County Department of Land and Resource Management GIS section. Mapping contact: LRM@carrollcountymd.gov or 410-386-2949. Zoning contact: zoningadministration@carrollcountymd.gov or 410-386-2980



By Resolution of the County Commissioners of Carroll County, Maryland, a body corporate and politic of the State of Maryland

Map signed this 12<sup>th</sup> Day of December, 2019

Attest: *Shawn D. Reese* County Clerk

*Stephen A. Wantz* President  
 Edward C. Rothstein Vice-President  
 C. Richard Weaver 2nd Vice President

*C. Eric Bouchat* Commissioner  
 Dennis E. Frazier Commissioner

COUNTY COMMISSIONERS OF CARROLL COUNTY, MARYLAND

**Zoning Map 58**