

Zoning Map 53



Zoning Districts

Residential District

- R-40,000
- R-20,000
- R-10,000
- R-7,500

Commercial District

- C-1
- C-2
- C-3
- I-1
- I-2

Employment Campus

- Employment Campus

Resource District

- Heritage
- Agriculture
- Conservation

Overlays

Mineral Resource Overlay

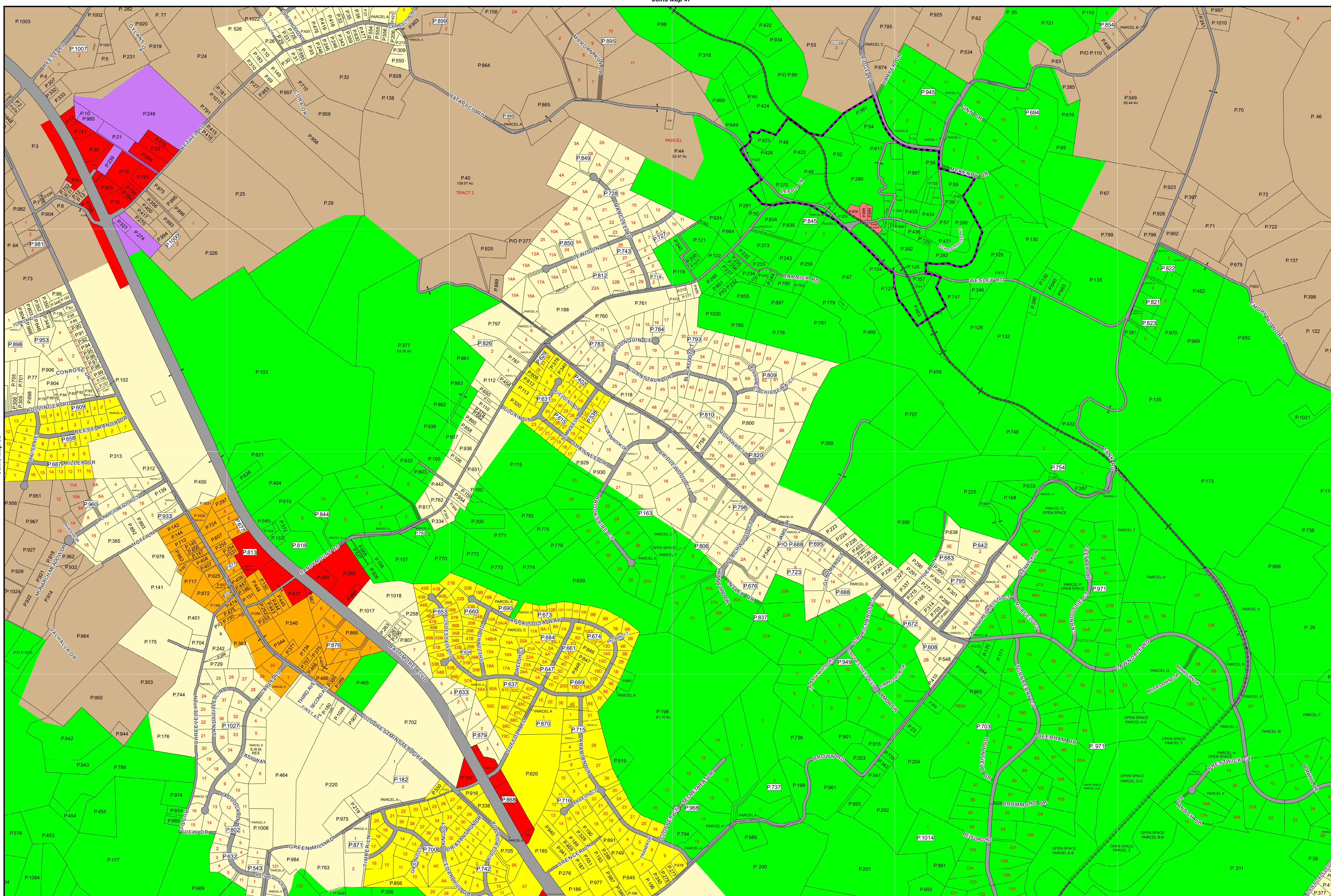
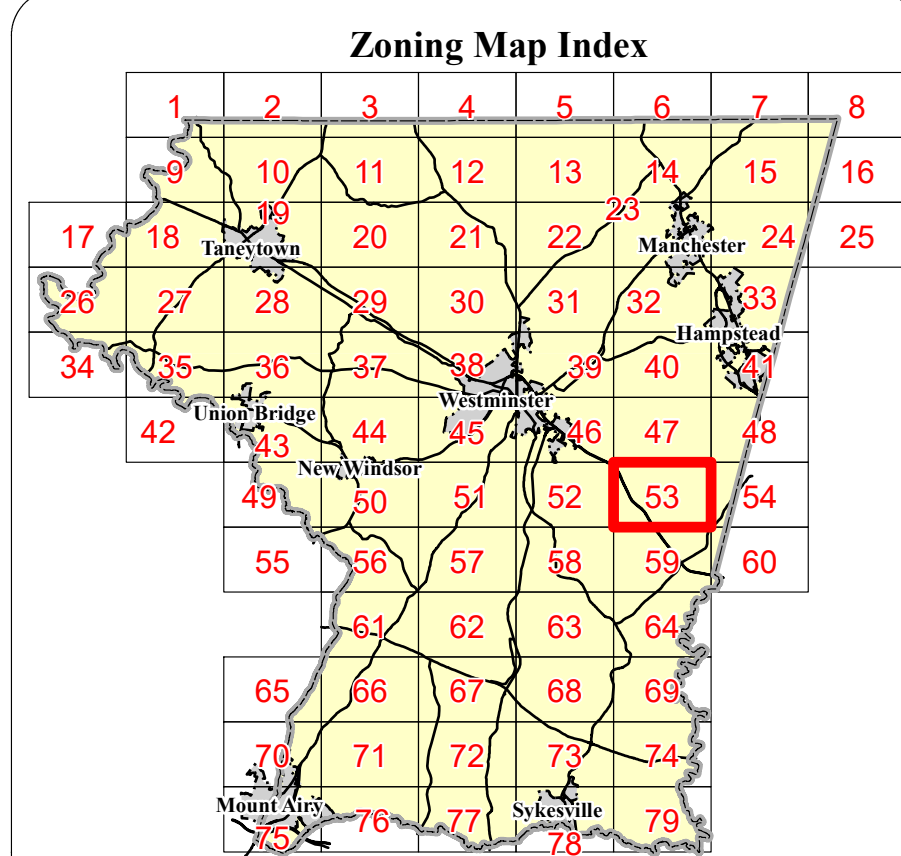
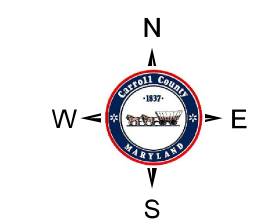
- MR (Recovery Area)
- VRA (Viable Resource Area)
- MRN (Notification Area)

Historic District Overlay

- Historic District Overlay

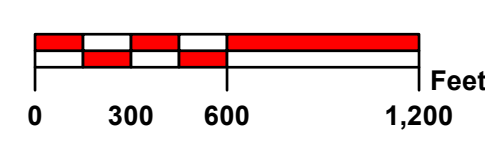
General

- County Border
- Corporate Limits
- Election District Boundary
- Parcel Boundary
- Railroad
- Rural Villages



| Rev. # | MA # | Date | Description | Rev. # | MA # | Date | Description |
|--------|--------------|------------|------------------------------|--------|------|------|-------------|
| 9. | | | | 18. | | | |
| 8. | | | | 17. | | | |
| 7. | | | | 16. | | | |
| 6. | | | | 15. | | | |
| 5. | Ord. 2021-01 | 1/14/2021 | Comprehensive Rezoning | 14. | | | |
| 4. | Ord. 19-08 | 12/12/2019 | Comprehensive Rezoning | 13. | | | |
| 3. | MA 102 | 1/6/1981 | Comprehensive Plan Finksburg | 12. | | | |
| 2. | MA 90 | 5/17/1979 | Rezoning Case #92 | 11. | | | |
| 1. | MA 33 | 7/24/1969 | Rezoning Case #31 | 10. | | | |

The information contained on this map is not to be construed or used as a "legal description" and is not a survey product. While Carroll County strives to provide the best data possible, it does not provide any warranty of accuracy or completeness regarding the map information. Where uncertainty exists in regards to the zoning districts, a determination by the Zoning Administrator may be required. Any errors or omissions should be reported to the Carroll County Department of Land and Resource Management GIS section. Mapping contact: lrm@carrollcountymd.gov or 410-386-2949. Zoning contact: zoningadministration@carrollcountymd.gov or 410-386-2980



By Resolution of the County Commissioners of Carroll County, Maryland, a body corporate and politic of the State of Maryland

Map signed this _____ Day of _____, 20____

Attest:
Vivian Daly Acting County Clerk

| | | | |
|---------------------|----------------|-------------------|--------------|
| Edward C. Rothstein | President | C. Eric Bouchat | Commissioner |
| C. Richard Weaver | Vice-President | Dennis E. Frazier | Commissioner |
| Stephen A. Wantz | Commissioner | | |

COUNTY COMMISSIONERS OF CARROLL COUNTY, MARYLAND

Zoning Map 53