

Zoning Map 27

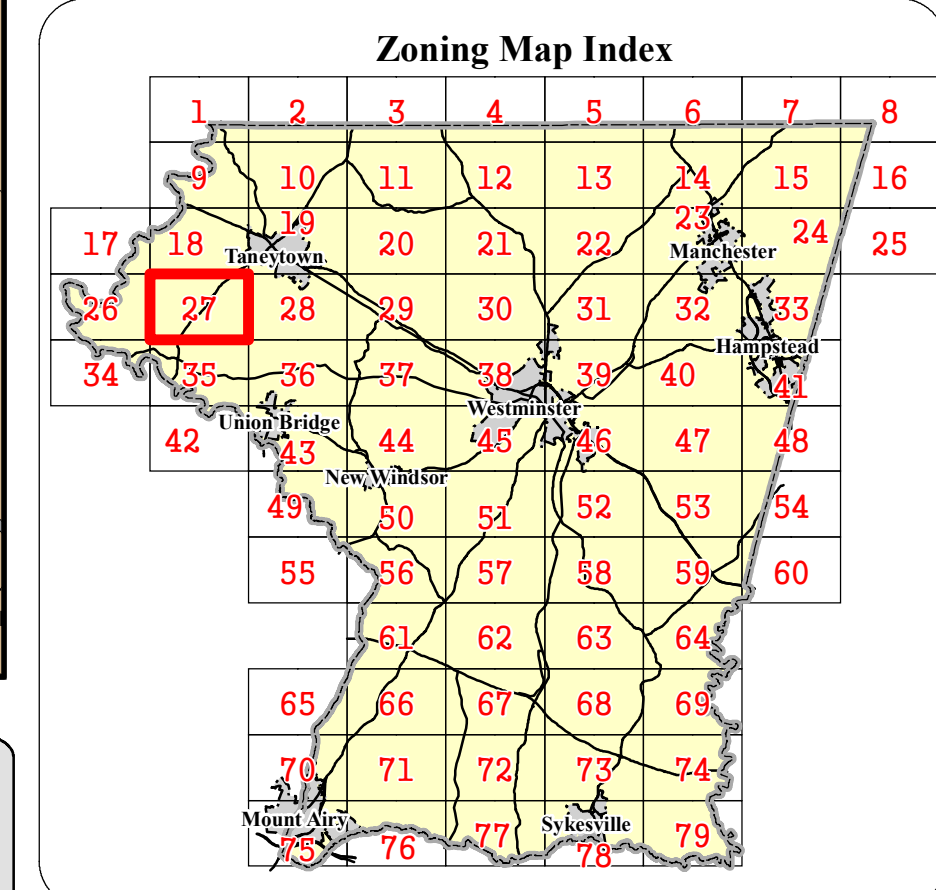
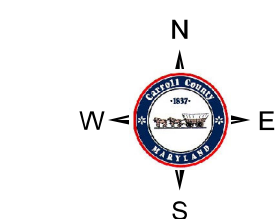
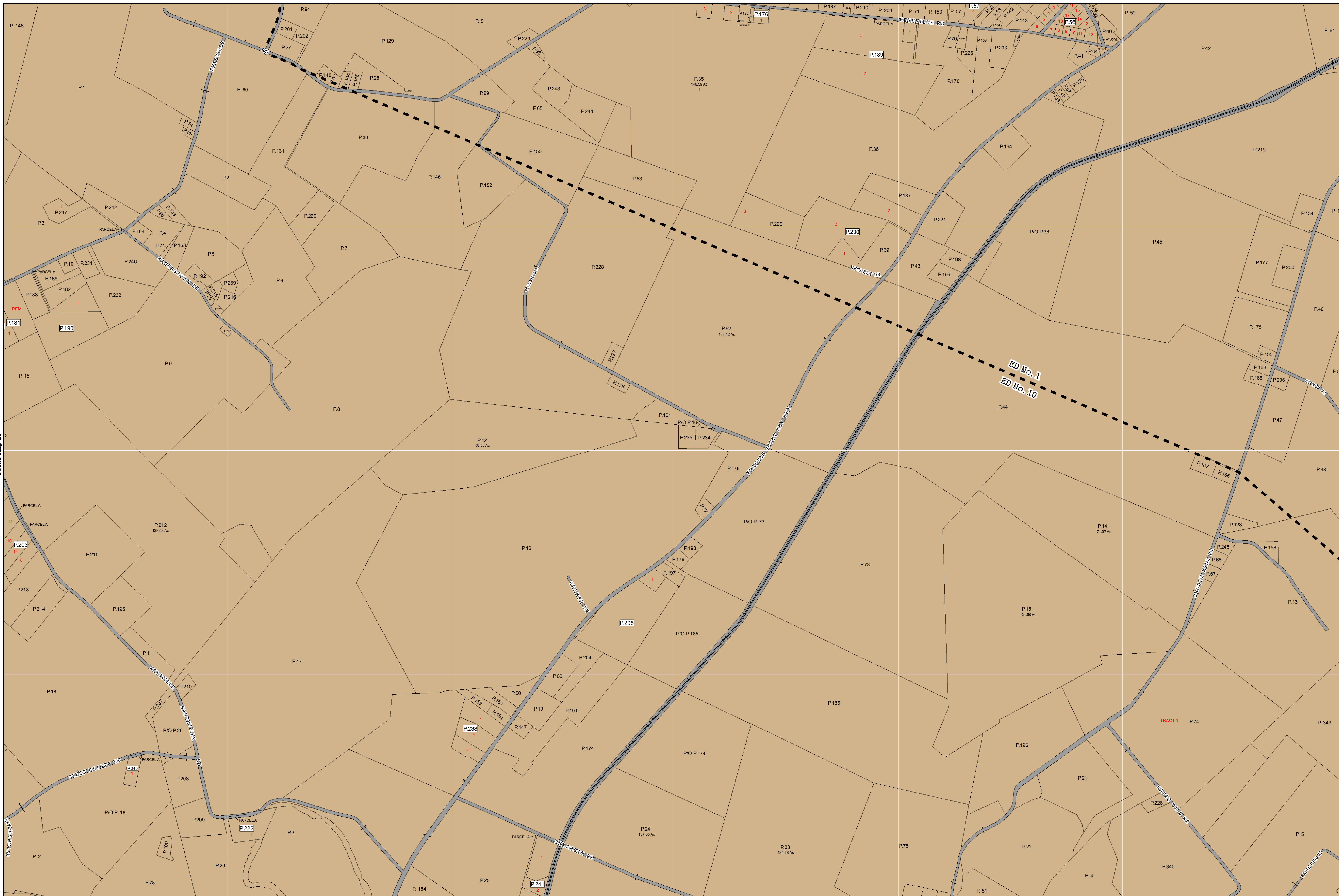


Zoning Districts

- R-7,500
- R-10,000
- R-20,000
- R-40,000
- Neighborhood Retail Business
- Business General
- Industrial Restricted
- Industrial General
- Conservation
- Agricultural
- Mobile Home Park
- Heritage

Overlays

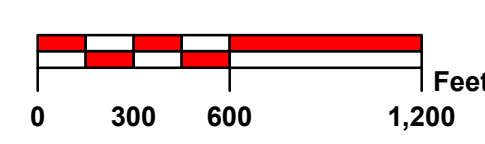
- Mineral Resource Overlay**
- MR (Recovery Area)
  - VRA (Viable Resource Area)
  - MRN (Notification Area)
- Historic District Overlay**
- Historic District Overlay
- General**
- County Border
  - Corporate Limits
  - Election District Boundary
  - Parcel Boundary
  - Railroad



9.				18.			
8.				17.			
7.				16.			
6.				15.			
5.				14.			
4.				13.			
3.				12.			
2.				11.			
1.				10.			
Rev. #	MA #	Date	Description	Rev. #	MA #	Date	Description

The information contained on this map is not to be construed or used as a "legal description" and is not a survey product. While Carroll County strives to provide the best data possible, it does not provide any guaranty of accuracy or completeness regarding the map information. Where uncertainty exists in regards to the zoning districts, a determination by the Zoning Administrator may be required.

Any errors or omissions should be reported to the Carroll County Department of Land Use, Planning & Development's GIS section. Mapping contact: ecplanning@ccg.carroll.org or 410-386-2145 Zoning contact: zoningadministration@ccg.carroll.org or 410-386-2980



By Resolution of the County Commissioners of Carroll County, Maryland, a body corporate and politic of the State of Maryland

Map signed this \_\_\_\_\_ Day of \_\_\_\_\_, 20\_\_\_\_

Attest: Shawn D. Reese County Clerk

J. Douglas Howard	President	Robin B. Frazier	Commissioner
David H. Roush	Vice-President	Richard S. Rothschild	Commissioner
Haven N. Shoemaker, Jr.	Secretary		

COUNTY COMMISSIONERS OF CARROLL COUNTY, MARYLAND

Zoning Map 27