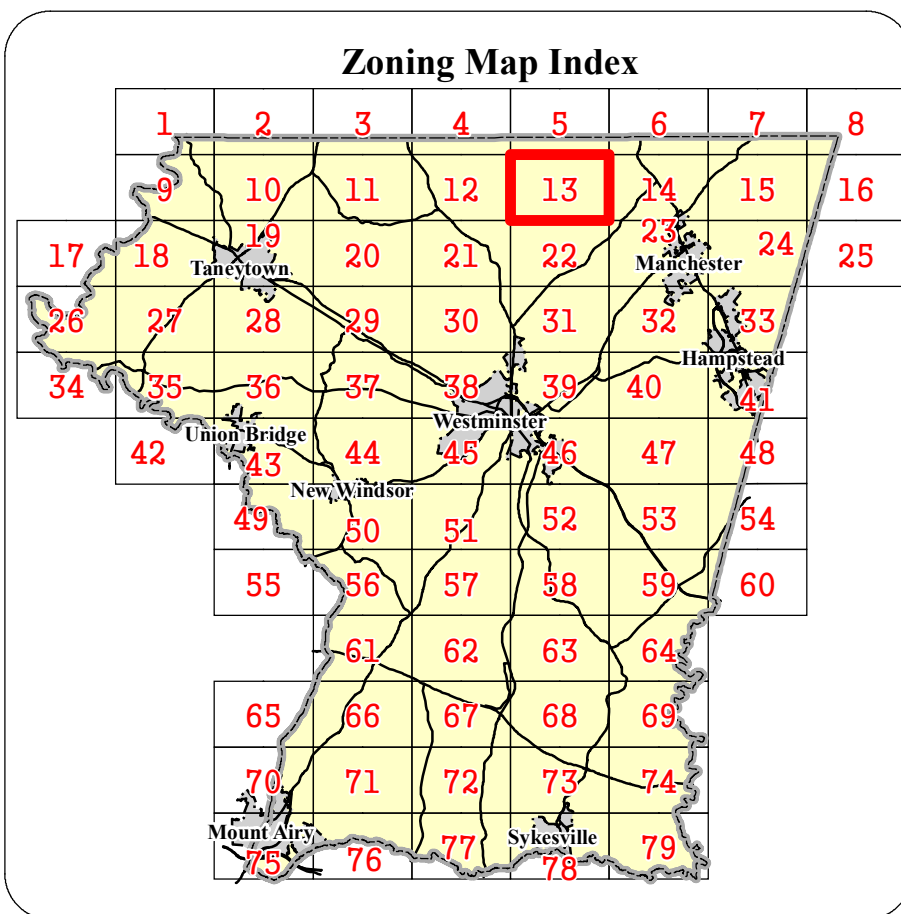
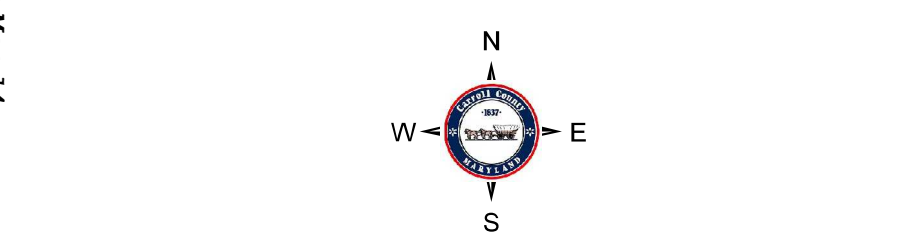
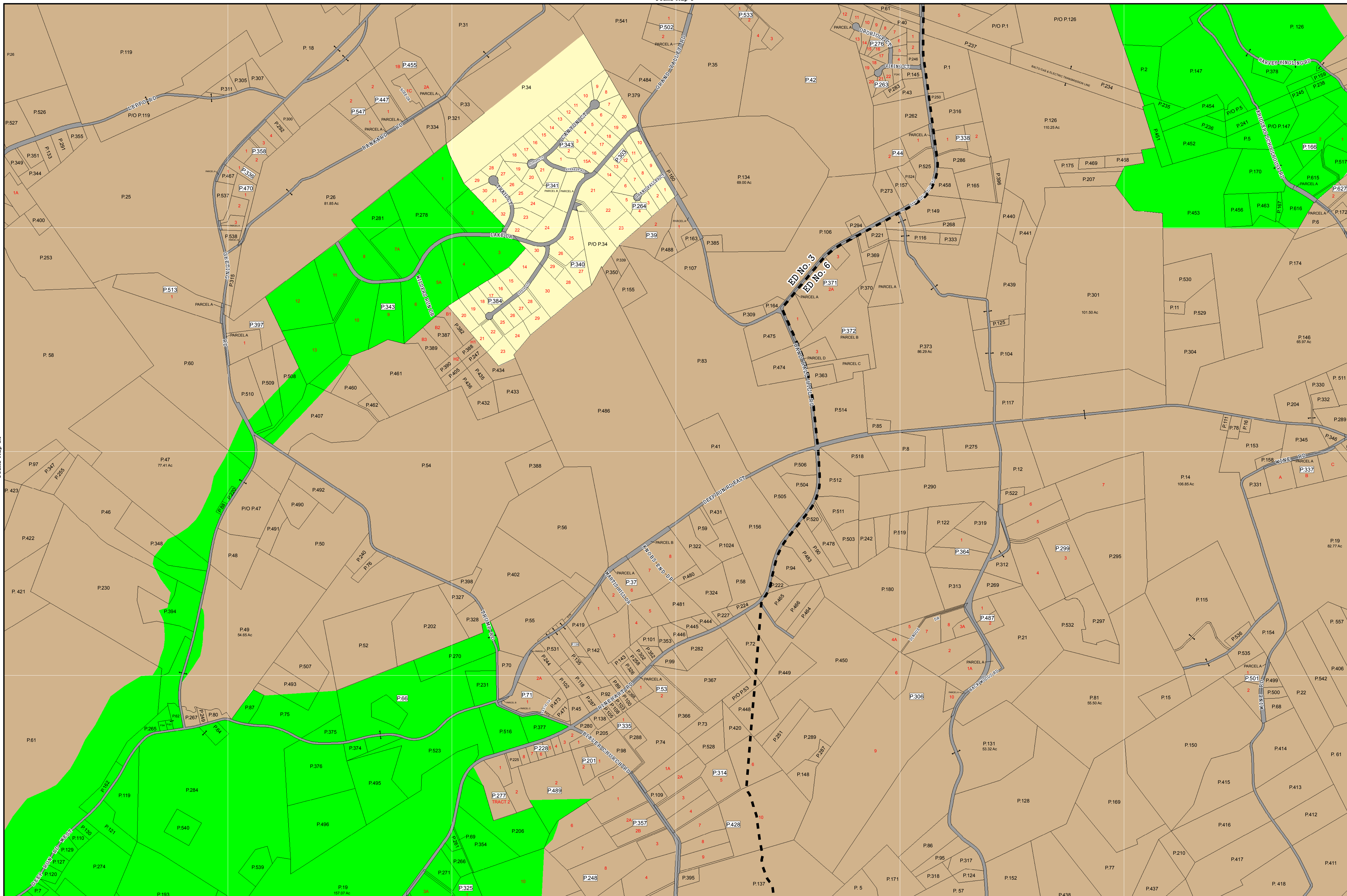


Zoning Map 13



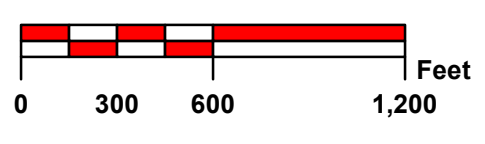
- Zoning Districts**
- R-7,500
 - R-10,000
 - R-20,000
 - R-40,000
 - Neighborhood Retail Business
 - Business General
 - Industrial Restricted
 - Industrial General
 - Conservation
 - Agricultural
 - Mobile Home Park
 - Heritage
- Overlays**
- Mineral Resource Overlay**
- MR (Recovery Area)
 - VRA (Viable Resource Area)
 - MRN (Notification Area)
- Historic District Overlay**
- Historic District Overlay
- General**
- County Border
 - Corporate Limits
 - Election District Boundary
 - Parcel Boundary
 - Railroad



Rev. #	MA #	Date	Description	Rev. #	MA #	Date	Description
9.				18.			
8.				17.			
7.				16.			
6.				15.			
5.				14.			
4.				13.			
3.				12.			
2.				11.			
1.	MA 52	6/29/1972	Revision to County Water & Sewer Plan	10.			

The information contained on this map is not to be construed or used as a "legal description" and is not a survey product. While Carroll County strives to provide the best data possible, it does not provide any guaranty of accuracy or completeness regarding the map information. Where uncertainty exists in regards to the zoning districts, a determination by the Zoning Administrator may be required.

Any errors or omissions should be reported to the Carroll County Department of Land Use, Planning & Development's GIS section. Mapping contact: ccplanning@ccy.carr.org or 410-386-2145 Zoning contact: zoningadministration@ccy.carr.org or 410-386-2980



By Resolution of the County Commissioners of Carroll County, Maryland, a body corporate and politic of the State of Maryland

Map signed this _____ Day of _____, 20____

Attest: Shawn D. Reese County Clerk

J. Douglas Howard President
 Robin B. Frazier Commissioner
 David H. Roush Vice-President
 Richard S. Rothschild Commissioner
 Haven N. Shoemaker, Jr. Secretary
 COUNTY COMMISSIONERS OF CARROLL COUNTY, MARYLAND

Zoning Map 13