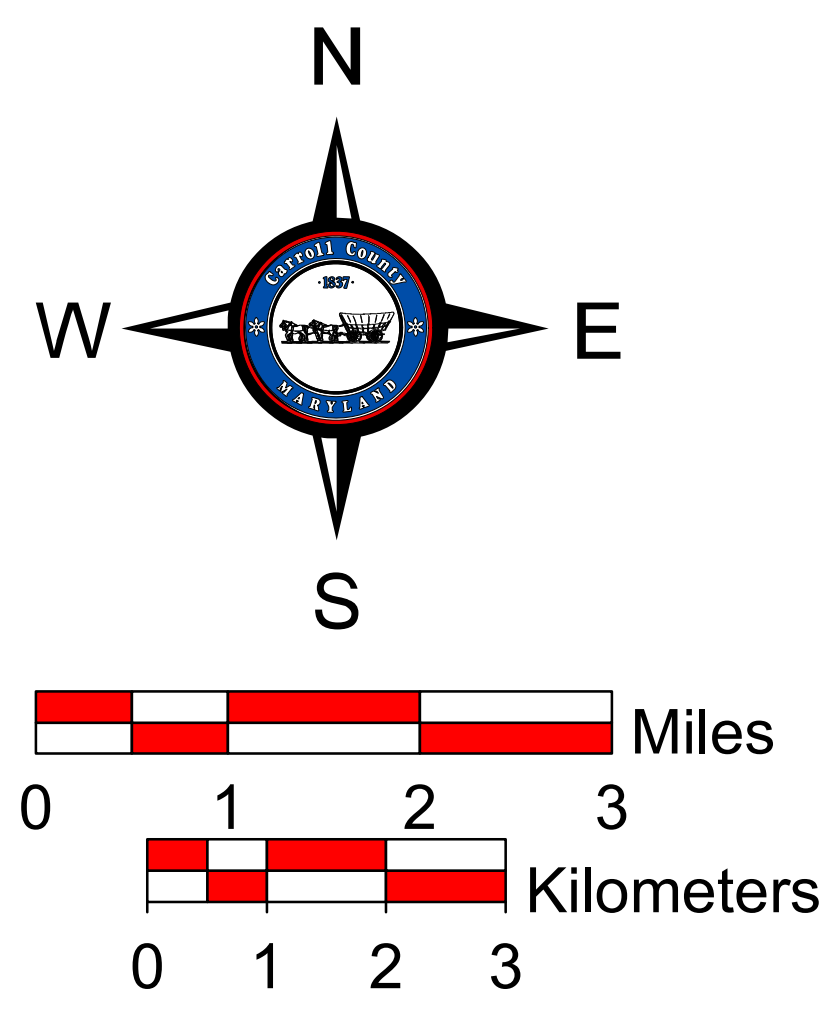
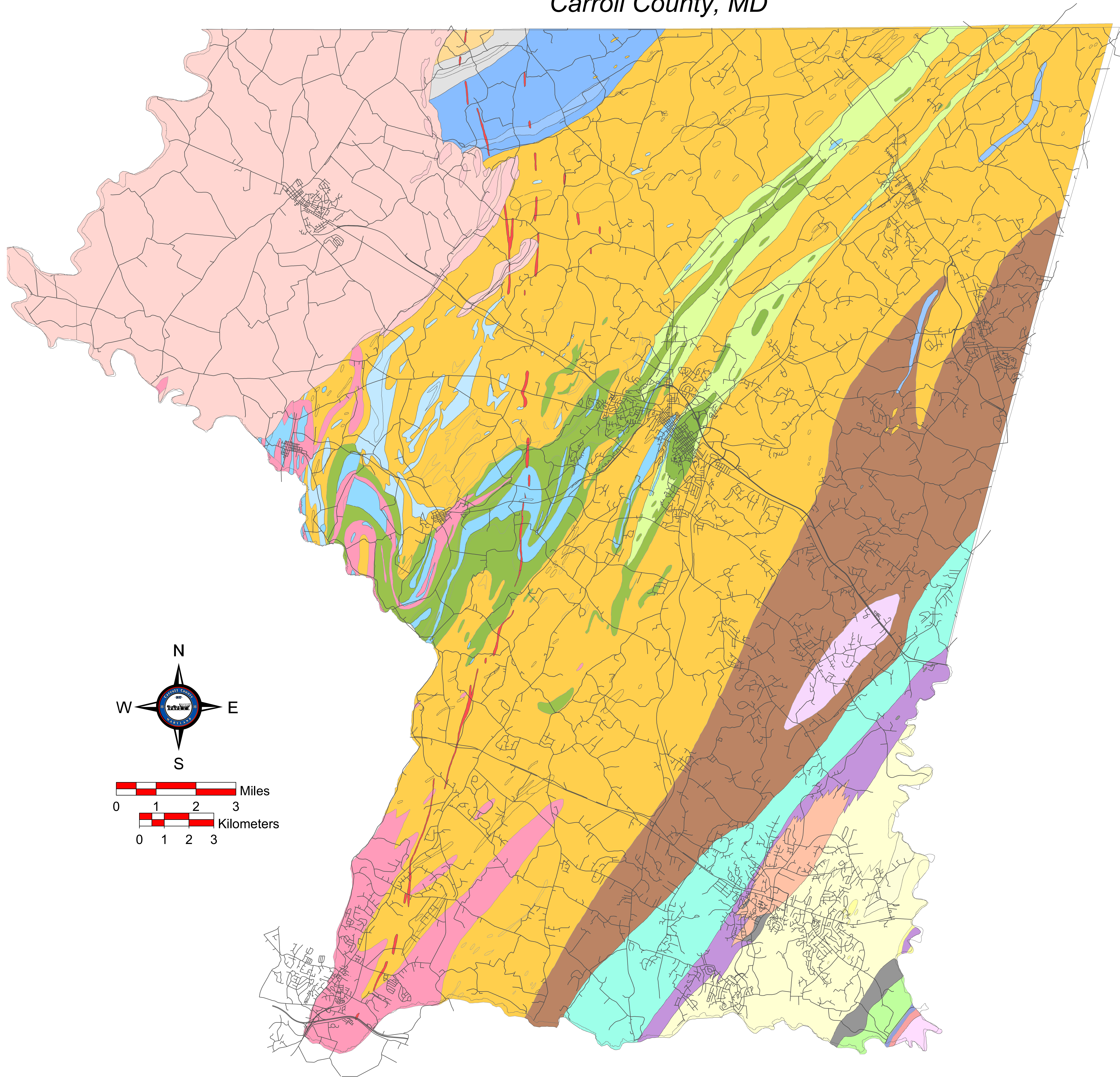


GEOLOGIC MAP

Carroll County, MD



Geology Legend

Triassic-New Oxford Fm.	Triassic-Quartz Cong.	Setters Fm.	Calcareous Zone
Littlestown Quartzite	Blacks Corner Phyllite	Triassic Diabase	Bachman Valley Fm.
Silver Run Limestone	Sams Creek-Metabasalt	Ultramafics	Ijamsville Phyllite
Wakefield Marble	Sams Creek-Schist	Pretty Boy Schist	Morgan Run Fm.
Pleasant Grove Schist	Sams Creek-Phyllite	Pretty Boy Schist-Garnet Schist	Oella Fm.
Piney Run Fm.	Sykesville Fm.-Schist	Baltimore Gneiss	Babylon Phyllite
Cockeysville Marble	Sykesville Fm.-Gneiss	Marburg Fm.	

County Geologic Map derived from "Geologic and Watershed Map of Carroll County, MD", R.E. Wright Associates, Inc. 1983.
 Updated geologic mapping has been completed for several of the quadrangles in Carroll County, contact Maryland Geological Survey for availability.